



FORWARD

Shenzhen is located on a southern tip of the Chinese mainland and on the eastern bank of the Pearl River. It neighbors Hong Kong. Occupying 1,991.64 square kilometers, the city has a subtropical marine climate with plenty of rain and sunshine and is rich in tropical fruit. By the end of 2015, there were 11.38 million permanent residents.

The country's first special economic zone — the brainchild of late Chinese leader Deng Xiaoping — was established here in 1980. Shenzhen has been a touchstone for China's reform and opening-up policy since then.

In merely 36 years, Shenzhen, once a tiny border town of just over 30,000 people, has grown into a modern metropolis. It established many firsts in the history of world industrialization, urbanization and modernization.

The city is the high-tech and manufacturing hub of southern China, home to the world's third-busiest container port and the fourth-busiest airport on the Chinese mainland. It is one of the country's most popular tourist destinations. It was also elected one of the top 10 Chinese cities popular with expats in 2015. The high-tech, financial services, modern logistics and cultural industries are mainstays of the city. Emerging industries of strategic importance and modern service industries are quickly becoming new engines for the city's economic growth. Shenzhen has set up new standards of "Shenzhen Quality" and "China Quality" on sustainable development and globalization. As a State-level innovative city, Shenzhen has chosen

independent innovation as the dominant strategy for its future development. The city's social investment in research and development in 2015 accounted for 4.05% of its GDP, which was twice the national average and outnumbered that of some developed countries. The number of Shenzhen's PCT (Patent Cooperation Treaty) applications has topped Chinese cities for several years. The 4G technology, genetic sequencing analysis, metamaterial technology, new energy automobile and 3D display technology are among the leading technologies in the world. Over the years, the number of makers in Shenzhen has been growing drastically. Many of the institutions, including Chaihuo Maker Space, Makeblock and Seeed Studio, have already gained much fame and influence both domestically and overseas. A Maker Week is held every June in Shenzhen, which provides makers from all over the world an international platform to create and innovate.

Shenzhen is the window of China's reform and opening up and one of the Chinese cities that enjoy the highest degree of opening up. Its export has topped the nation's large and medium-sized cities for 23 consecutive years. The number of Shenzhen's international sister cities has doubled to reach 73 in the past five years.

Shenzhen strives to play a pivotal role in the implementation of the Belt and Road Initiative to build itself into a gateway along the 21st-Century Maritime Silk Road by making full use of its geographic location and advantages in business and human resources, putting emphasis on the development of the Guangdong-Hong

Kong-Macao Big Bay Area, and focusing on transportation connectivity, economic and trade cooperation and cultural exchanges.

On April 27, 2015, the China (Guangdong) Pilot Free Trade Zone Qianhai & Shekou Area was officially launched. Shenzhen implements the overall planning of the Guangdong Free Trade Zone, and plans and builds the Qianhai & Shekou Area with high standards, thus speeding up the formulation of investment and trade rules in accordance with international practices. It will strive to build itself into a pilot demonstration window of the opening up of China's finance industry, a key base of world service trade and an international pivot port.

The city is also well-known for design, with more than 6,000 design companies employing more than 60,000 people. On Nov. 19, 2008, UNESCO named Shenzhen a member of its Creative Cities Network and awarded Shenzhen the title of City of Design. The total number of IF Design Award won by Shenzhen designers in 2015 was 42, topping China.

Shenzhen has unique cultural charm. The city has a network of first-class public cultural facilities that allow residents to enjoy thousands of cultural performances. Since 2003, when Shenzhen took the national lead in establishing the strategy for a culture-based city, its cultural and creative industries have achieved robust expansion with annual growth rates of more than 20% and become important engines for the city's economic development. Last year, Shenzhen started to carry out

the Cultural Innovative Development 2020 Plan and made an effort to build a modernized and globalized innovative city that has strong cultural power.

Shenzhen is an ecological garden city, with half of its total area under a form of environmental protection that bans construction. Shenzhen is China's first city to win the Nations in Bloom Award, and named on the United Nations Environment Program's Global 500 Laureate Roll of Honor.

A picturesque coastal city, Shenzhen is a popular tourist destination in South China and has been listed by the Chinese Government as an Excellent Tourist City.

Shenzhen, a city of compassion with a deep-rooted volunteer culture, has 10,100 social organizations and more than 1.1 million registered volunteers. Selected as China's "Most Charitable City" for several consecutive years, it promotes Project Care each year to help disadvantaged groups, and has been called a "city with no winter."

Shenzhen will strive to achieve bigger goals by continuing to adopt Shenzhen Quality and Shenzhen Standards, aiming at world first-class standards and establishing a quality and standard system covering the areas of economy, society, culture, urban development and ecology. It will strive to build itself into a beautiful city where people can live happily and make dreams come true by improving quality, creating brands, building up reputation, expanding market, and achieving sustained economic development.



Contents

FOREWORD

06	SHENZHEN BASICS
10	COMPREHENSIVE ECONOMIC STRENGTH
14	GATEWAY OF THE BELT AND ROAD INITIATIVE
18	CHECKPOINTS AND TRANSPORTATION
22	FOREIGN TRADE
26	HIGH-TECH
30	ENVIRONMENTALLY FRIENDLY ECONOMY
34	FINANCIAL SERVICES
38	MODERN LOGISTICS
42	CULTURAL INDUSTRY
48	CITY OF INNOVATION
52	EMERGING INDUSTRIES OF STRATEGIC IMPORTANCE
56	CHINA (GUANGDONG) PILOT FREE TRADE ZONE QIANHAI & SHEKOU AREA OF SHENZHEN
60	EDUCATION
64	SPORTS
68	PUBLIC HEALTH
72	TOURISM AND LEISURE
78	CULTURE AND ART
84	PUBLIC SERVICES
88	SOCIAL LIFE
92	CITY GUIDE
94	ACCOMODATION
96	RECOMMENDED ONE-DAY TRIPS
98	MAIN SCENIC SPOTS
100	TRAVEL AGENCIES



SHENZHEN PROFILE 2016

SHENZHEN BASICS

The development of Shenzhen, China's gateway to the outside world, is regarded as the epitome of the country's drive toward reform and modernization.

GEOGRAPHIC LOCATION

Shenzhen is a coastal city in South China, adjoining Hong Kong. Its longitude lies between 113.46 and 114.37 degrees east, and its latitude between 22.27 and 22.52 degrees north. Sitting south of the Tropic of Cancer, it is in southern Guangdong Province. Demarcated from Hong Kong by the Shenzhen River in the south, it is bordered by Dongguan and Huizhou in the north, Daya Bay and Dapeng Bay in the east and the Lingding Sea and the mouth of the Pearl River in the west.

NATURAL RESOURCES

The total area of Shenzhen is 1,991.64 square kilometers. Shenzhen has more than 310 rivers and streams, which are associated with the nine hydrographic systems. By the end of 2015, there were 168 reservoirs in Shenzhen, storing a total volume of 776 million cubic meters. Shenzhen Reservoir in the east has a total volume of 44.96 million cubic meters, and is the main water source for Shenzhen and Hong Kong.

Shenzhen has a vast sea area, covering 1,145 square kilometers and boasting 283 kilometers of coastline and typical subtropical marine climate and vegetation. The city also has rich natural attractions, including popular beaches such as Dameisha, Xiaomeisha, Xichong, Dapeng Peninsula National Geopark and nature reserves like the Mangrove Nature Reserve, Wutong Mountain and Inner Lingding Island.



HISTORY

The earliest-known records bearing the name "Shenzhen" date from 1410, during the Ming Dynasty (1368-1644). Shenzhen became a township at the beginning of the Qing Dynasty (1644-1911). Local people called the drains in paddy fields "zhen" or "chong." Shenzhen literally means "deep drains" because the area used to be crisscrossed by rivers and streams — and still is, today — with deep drains in the paddy fields. Shenzhen is also known as "Roc City" because maps of the city's outline resemble a flying roc with its wings spread.

The city of Shenzhen was established in 1979. In August of the following year, the country's first special economic zone was established here.

Human activity in the area dates back more than 6,700 years. The area was founded as a county 1,700 years ago and is home to 600-year-old cultural relics such as Nantou Ancient City and Dapeng Fortress. The Hakka people migrated to the area from central China about 300 years ago.

ADMINISTRATIVE DIMSIONS

Shenzhen is a sub-provincial city. It has direct jurisdiction over six districts and four new areas: Luohu, Futian, Nanshan, Yantian, Bao'an and Longgang districts, and Guangming, Pingshan, Longhua and Dapeng new areas. The Central Government expanded the special economic zone to cover the whole city on July 1, 2010.

DEMOGRAPHICS

There has been migration to southern Guangdong and what is now Shenzhen since the late Southern Song Dynasty (1127-1279), but the population increased dramatically after the city of Shenzhen was established. By the end of 2015, the permanent resident population reached 11.38 million, of which 3.55 million had permanent hukou.

MIGRANT CULTURE

As a city of migrants, Shenzhen is open-minded, tolerant and innovative. It is an ideal place for domestic and international talent to start businesses. It has been voted as China's Most Dynamic City and City Most Favored by Migrant Workers.

LANGUAGES

Shenzhen is the only city in Guangdong where Mandarin is the dominant language, because of its huge migrant population from all over China. Many public service employees, professionals and businesspeople speak English too. Most of the young people speak English and Cantonese. The Shenzhen Speaks Foreign Languages campaign is conducted across the city to encourage more residents and government employees to learn to speak foreign languages.

CLIMATE

Shenzhen has a subtropical marine climate. The weather is generally temperate to mild, with plenty of rain and sunshine. The annual average temperature is 22.4 degrees Celsius. A total of 355 days a year are frost-free. The yearly rainfall totals 1,933 millimeters and the average annual number of hours of sunshine is 2,120.

OFFICIAL TREES AND FLOWER

The litchi and mangrove trees are Shenzhen's official trees and bougainvillea is the official flower.

DEVELOPMENT GOAL

Shenzhen Party chief Ma Xingrui delivered a report at the sixth municipal congress of the CPC on May 26, 2015. The report laid out Shenzhen's blueprint for the next five years, calling for the special economic zone to lead the country's reform and opening up. The report also urged the city to establish an indigenous innovation demonstration zone and become a national economic hub, an international city with bigger competitiveness and influence, and a happy city with higher living standards.

An aerial photograph of Shenzhen, China, taken at sunset. The sky is a mix of deep blue and vibrant orange, with wispy clouds catching the low light. The city below is a dense grid of buildings, many of which are illuminated with warm lights, creating a glowing effect against the twilight. The perspective is from a high vantage point, looking across the city towards the horizon where the sun has just set.

SHENZHEN PROFILE 2016

COMPREHENSIVE ECONOMIC STRENGTH

Shenzhen is among the top mainland cities for economic returns. The city ranked first on the list of 2016 China's Urban Comprehensive Economic Competitiveness Report, which was co-released by the National Academy of Economic Strategy of the Chinese Academy of Social Sciences (CASS), China Social Sciences Press, and the Center for City and Competitiveness of CASS.



ECONOMIC GROWTH

In 2015, Shenzhen's economy maintained a healthy momentum of growth. GDP grew by 8.9% to 1.75 trillion yuan.

Its total retail sales of consumer goods increased by 2% to 501.78 billion yuan. Foreign trade volume increased to US\$442.55 billion. Export and import volume has stayed at the top of the nation's large and medium-sized cities for the 23rd consecutive year.

ECONOMIC POWER

Shenzhen is fourth on the Chinese mainland in terms of economic power and is one of the country's top cities for economic returns. Surpassing Hong Kong for the first time, Shenzhen placed first on the list of 2015 Chinese cities' comprehensive economic competitiveness, according to the 2015 Competitiveness of Chinese Cities Blue Book.

FISCAL REVENUE

Shenzhen reported 272.71 billion yuan in local revenue in 2015, up 30.9% from 2014. The public budget expenditure in 2015 was 351.9 billion yuan, up 62.5% from the previous year.

ECONOMIC STATUS

Shenzhen is a link between the Chinese mainland and Hong Kong and a transport hub for coastal southern China. The city leads in high-tech development, financial services, foreign trade, shipping, and creative and cultural industries. It has undertaken a mission to pilot China's structural reform and continuous opening up to the outside world.



SHENZHEN PROFILE 2016

GATEWAY OF THE BELT AND ROAD INITIATIVE

Shenzhen strives to play a pivotal role in the implementation of the Belt and Road Initiative to build itself into a gateway along the 21st-Century Maritime Silk Road by making full use of its geographic location and advantages in business and human resources, putting emphasis on the development of the Guangdong-Hong Kong-Macao Big Bay Area, and focusing on transportation connectivity, economic and trade cooperation and cultural exchanges.

ECONOMIC AND TRADE LINKS

Shenzhen has its own advantages in building itself into a strategic pivot in the Belt and Road Initiative. It has developed a sound economic and trade relationship with the countries along the Silk Road Economic Belt and the 21st-Century Maritime Silk Road that has resulted in an impressive foreign trade volume since its industrial structure is quite complementary to that of the countries along the Belt and the Road. In 2015, Shenzhen has carried out several implementation schemes to support local enterprises to invest in the projects from the countries along the Belt and the Road. About US\$8.5 billion has been invested and the investment increased by 94%. The actual foreign investment increased by 272%.



BAY AREA ECONOMY

Shenzhen will speed up the development of the bay area economy to promote its economic upgrading and increase its economic returns. To better implement the Belt and Road Initiative, Shenzhen will coordinate regional resources, build an economic corridor highlighting Qianhai Bay, Shenzhen Bay, Dapeng Bay and Daya Bay, and accelerate the upgrading of its bay area economy.

CONSTRUCTION OF FREE TRADE ZONE AND DEVELOPMENT AND OPENING UP OF QIANHAI

Shenzhen implements the overall planning of the Guangdong Free Trade Zone, plans and builds the Qianhai & Shekou Area with high standards, and speeds up the formulation of investment and trade rules in accordance with international practices. It will strive to build itself into a pilot demonstration window of the opening up of China's finance industry, a key base of world service trade and an international pivot port. It will enhance cooperation with Hong Kong, speed up the development and opening up of Qianhai, integrate the development of high-end service industry, emerging service industry and headquarters economy, and enhance service and trade liberalization. By 2020, Qianhai's GDP is expected to reach 150 billion yuan.

INFORMATION SILK ROAD

Information infrastructure is essential to the implementation of the Belt and Road Initiative. As the information infrastructure is inadequate in the countries along the Belt and Road, investment demand in the sector is big and the market potential for information products is huge. The Information Silk Road will expand spaces, tap new markets and create new opportunities for the development of Shenzhen's information industry.

Shenzhen is a powerhouse of China's electronic information industry, with its annual industrial output value exceeding 1 trillion yuan. It is also China's as well as the world's key research, production and export base of telecommunication equipment, flat panel display, computers and peripheral devices, electronic components, home audiovisual products and software.

Shenzhen has a developed Internet industry. In 2015, Shenzhen's Internet industry growth increased by 19.1%. The volume of e-commerce trade amounted to 1.7 trillion yuan. Shenzhen's Internet finance leads the country with the largest number of online loan platforms.

Shenzhen has more than 90,000 Internet-related businesses and a large number of world-renowned Internet companies.

An aerial photograph of Shenzhen Bao'an International Airport during sunset. The main terminal building, with its distinctive white, perforated, bird-like roof, is the central focus. Numerous aircraft are parked at gates along the terminal's long pier. The tarmac is visible with various ground service vehicles. The sky is filled with soft, golden clouds, and the sun is low on the horizon, creating a warm glow over the entire scene.

SHENZHEN PROFILE 2016

CHECKPOINTS AND TRANSPORTATION

Shenzhen has land, sea, air and rail checkpoints. Checkpoints in Shenzhen have the largest flow of people and goods in China.

CHECKPOINTS

Shenzhen has 15 checkpoints that allow the flow of both Chinese and foreign nationals. Luohu Checkpoint is China's busiest land passenger checkpoint, while Huanggang Checkpoint offers around-the-clock service. Futian Checkpoint offers seamless transfer by Metro to Hong Kong, and Shenzhen Bay Checkpoint offers both Hong Kong and Shenzhen immigration inspection services. In 2015, 239 million people and 15.5 million vehicles crossed the border through Shenzhen checkpoints. An average of 654,000 people and 42,500 vehicles crossed the border per day.

CUSTOMS

Shenzhen Customs is under the direct leadership of the General Administration of Customs of China. Shenzhen and Huizhou are both under the jurisdiction of Shenzhen Customs, one of China's busiest customs agencies. It provides around-the-clock customs declarations for enterprises.

SHIPPING

Shenzhen has 159 berths, including 42 container berths. A total of 255 international container routes go through Shenzhen, giving the city one of China's highest densities of international liners. It has 46 foreign trade barge routes and 19 sister ports.

CIVIL AVIATION

Shenzhen Bao'an International Airport is China's first modern airport that opened to all transport modes — road, waterborne and air. It has 42 passenger airlines, 11 cargo airlines, 157 passenger air routes and 36 cargo routes to 123 cities in 14 countries and regions. In 2015, the airport handled 39.72 million passengers and 1 million tons of cargo. The airport placed fourth among domestic airports in terms of comprehensive strength.

RAILWAY NETWORK

Shenzhen is an important railway terminal in South China, the regional center of the Pearl River Delta and the primary supporting point in the planned transportation network. As the critical lines of Hangzhou-Fuzhou-Shenzhen Railway and Beijing-Hong Kong Railway, Xiamen-Shenzhen Railway and Guangzhou-Shenzhen Railway started operating in 2013 and 2011 respectively. In addition, Shenzhen North Railway Station, Shenzhen East Railway Station and Shenzhen Pingshan Railway Terminal are becoming regional rail transport hubs in southern China.

ROAD NETWORK

By March 2015, Shenzhen had 88 road passenger transport companies, 35 regular bus companies, 73 chartered vehicle companies and 20 companies operating regular buses and chartered vehicles. Shenzhen has long-distance buses to all major counties and cities in Guangdong, Hong Kong and Macao, as well as more than 20 provinces, municipalities and autonomous regions, including Hainan, Guangxi, Hunan, Jiangxi, Fujian, Shanghai and Liaoning. Shenzhen will play a bigger role as a road transport hub in the pan-Pearl River Delta area with the integration of delta cities and the expansion of the expressway network.

SHENZHEN METRO

By the end of July 2016, six Metro lines with over 200 vehicles were being operated in Shenzhen, forming a 229-km Metro network. In 2015, Shenzhen Metro transported 1.12 billion passengers and a maximum of 3.07 million people each day, accounting for 31.3% of the total public transportation. Rail traffic has become an important part of public transport in the city.

BUS TRANSPORTATION

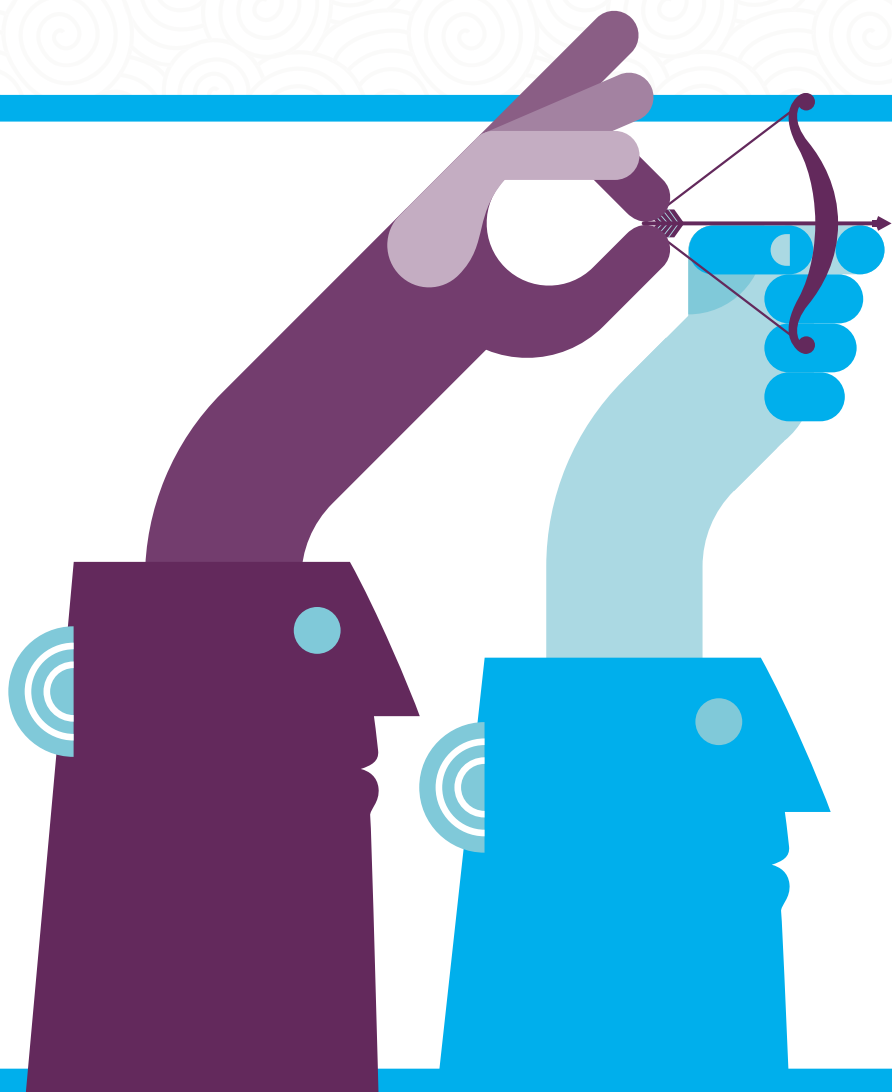
By the end of 2015, about 10 million passengers used public buses daily. About 94.96% residents could walk to a bus stop within 500 meters of their home. The city owns 15,120 public transport vehicles and has 903 public transport routes under operation which extended about 965 million kilometers. The total number of new-energy vehicles used for public transport has reached 9,085, among which 6,650 are buses and 2,435 are electric taxis.

An aerial photograph of Shenzhen, China, showing a mix of urban development and natural landscape. In the foreground, there are modern residential buildings with red-tiled roofs and a large sports field. A long bridge spans a body of water in the middle ground, with a port area featuring several red cranes visible in the distance. The background shows more city buildings and mountains under a blue sky with large white clouds.

SHENZHEN PROFILE 2016

FOREIGN TRADE

Shenzhen has ranked first among all large and medium-sized Chinese cities in export volume for 23 consecutive years. Of the Fortune Global 500 companies, 196 have branches in the city by the end of 2015.



IMPORTS AND EXPORTS

Total exports and imports reached US\$442.55 billion in 2015, comprising 11.2% of the national total. The figure was 43.3% of the total of Guangdong Province. Exports reached US\$264.08 billion, comprising 11.6% of the national total and 41% of the Guangdong total. Imports reached US\$178.47 billion, accounting for 10.6% of the national total and 47% of the Guangdong total.

USE OF FOREIGN INVESTMENT

In 2015, a total of 3,359 projects directly invested by foreign enterprises were granted, up 34.9% from last year. The contractual use of foreign investment in Shenzhen reached US\$25.6 billion, up 134.9% from the previous year and the actual use of foreign investment was US\$6.5 billion, up 11.9% from last year.

OUTBOUND INVESTMENT

In 2015, local companies actively invested abroad. They set up 1,030 enterprises and organizations outside the mainland. The agreed investments of Chinese enterprises amounted to US\$16.57 billion, up 214.7% from a year ago. Actual direct outbound investment reached US\$ 5.13 billion, up 28.9% from a year ago.



SHENZHEN PROFILE 2016

HIGH-TECH

Strong R&D capability and a complete industrial chain have made high-tech industries Shenzhen's most important pillar.

OUTPUT VALUE

The total output value of high-tech products made in Shenzhen reached 1.7 trillion yuan in 2015, up 11.16% from the previous year.

INPUT IN R&D

In 2015, expenditure of R&D of Shenzhen accounted for 4.05% of its GDP.

R&D POWER

In 2015, the PCT applications amounted to 13,300, comprising 46.9% of the nation's total and stayed at the top of China for several consecutive years. There are 5,524 recognized State-level high-tech enterprises in Shenzhen. The 4G technology, genetic sequencing analysis, metamaterial technology, new energy automobile and 3D display technology are among the leading technologies in the world.

HIGH-TECH INDUSTRIAL PARK

Construction of the Shenzhen High-Tech Industrial Park, known as SHIP, started in September 1996, with a planned area of 11.5 square kilometers. In 2015, there were 985 high-tech companies in the park and 444 companies' annual output value was over 100 million yuan. There were 84 listed companies.

VIRTUAL UNIVERSITY PARK

Shenzhen Virtual University Park was built in 1999. The park's major functions are to train and introduce first-class professionals, integrate industrial and research resources, establish key research labs and doctoral workshops, and promote cooperation between Hong Kong and Shenzhen research centers. So far, it has cultivated more than 240,000 professionals, and fostered 967 start-up companies and 240 research centers. It has eight peacock teams.

HI-TECH FAIR

Cosponsored by the Ministry of Commerce, Ministry of Science and Technology, Ministry of Industry and Information Technology, National Development and Reform Commission, Ministry of Education, Ministry of Human Resources and Social Security, Ministry of Agriculture, State Intellectual Property Office, Chinese Academy of Sciences, Chinese Academy of Engineering and Shenzhen Municipal Government, the China Hi-Tech Fair (CHTF) began in 1999 and has been held each year since. The 18th CHTF will be held in November 2016. Learn more at: www.chtf.com/.

BGI-SHENZHEN

BGI-Shenzhen, established in 2007, is engaged in scientific research of public interest. BGI-Shenzhen has achieved breakthroughs in the large-scale discovery of gene resources, in the sequencing of complicated genomes of higher forms of life, and in the research of inherited diseases. BGI-Shenzhen topped the industrial organizations by collaboration score. Learn more at: www.genomics.cn/.

SHENZHEN INSTITUTE OF ADVANCED TECHNOLOGY OF CAS

The Shenzhen Institute of Advanced Technology of CAS was established in 2006 by the Chinese Academy of Sciences (CAS), Shenzhen Municipal Government and The Chinese University of Hong Kong. With a talent pool of around 2,000 scientists, the institute focuses on fields including robotics, healthcare and medicine, new energies and new materials, cloud computing and the Internet of Things. It incubated over 300 companies and five of them will be listed on the National Equities Exchange and Quotations System or ChiNext.

KUANG-CHI INSTITUTE OF ADVANCED TECHNOLOGY

The Kuang-Chi Institute of Advanced Technology is a research institute sponsored in 2010 by industries, government and venture capitalists. Kuang-Chi Institute attracts distinguished scientists from different countries and territories and features collaborative cross-disciplinary research on metamaterials. In 2015, its patent applications reached 3,000 and the patents in metamaterial research accounted for 85% of the total applications in this field. Learn more at: www.kuang-chi.org/.

NATIONAL SUPERCOMPUTING CENTER

The National Supercomputing Center in Shenzhen (Shenzhen Cloud Computing Center) is the city's largest scientific infrastructure facility. The Dawn 6000 supercomputer system can perform 1.27 quadrillion calculations per second, certified in 2010 as the second-fastest system in the world. The center was put into use in November 2011, processing massive data for scientific research, technological and engineering projects as well as serving as a cloud computing center for the whole society. Learn more at: www.nscsz.gov.cn/.

SHENZHEN-HONG KONG INNOVATION CIRCLE

The establishment of the Shenzhen-Hong Kong Innovation Circle fosters technological collaboration between Shenzhen and Hong Kong to create a global innovation center across the region. Since Shenzhen and Hong Kong signed a plan supporting the Shenzhen-Hong Kong Innovation Circle in 2007.

HIGH-TECH TALENT POOL

By the end of 2015, Shenzhen was home to 1.35 million professional technicians. Of those technicians, 60,000 had studied abroad. The Peacock Plan, aiming to attract top talent from overseas, helped 588 professionals settle in the city in 2015 and helped 1,364 talents in total. In 2015, there were 2.85 million skilled talents in Shenzhen, among them 690,000 were high-skilled talents.

A wide-angle photograph of the Shenzhen skyline under a blue sky with scattered white clouds. In the foreground, a lush green mangrove wetland is populated by numerous white birds, likely egrets, standing and nesting among the dense vegetation. The city's high-rise buildings are visible in the background, creating a contrast between urban development and natural habitat.

SHENZHEN PROFILE 2016

ENVIRONMENTALLY FRIENDLY ECONOMY

With a continuously expanding economy and fast evolving science and technologies, Shenzhen is upgrading its industries to promote an environment-friendly lifestyle and low-carbon growth. The quality, optimally structural and low-energy consuming development mode has become the city's new normal. About half of Shenzhen's total area is within a nature protection zone for suburban parks. Forests cover 41.2% of the city's total land.

SAVING ENERGY AND REDUCING EMISSION

In 2015, Shenzhen achieved the emission reduction target, set by Guangdong Province, of four major pollutants, namely chemical oxygen demand, ammonia nitrogen, sulfur dioxide and nitrogen. The emission reduction of chemical oxygen demand, ammonia nitrogen and sulfur dioxide also met ahead of time the target set by the 12th Five-Year Plan for Energy Saving and Emission Reduction. The city's water consumption per 10,000 yuan of GDP fell by 43%.

The city has promoted the usage of renewable energy such as solar power and garbage power. There are seven garbage incineration power plants and they generated 978,000,000 kilowatt-hours in 2015, making Shenzhen a national leader in the use of renewable energy.

Shenzhen fully adopted the national IV and up emission standards and promoted the use of gasoline meeting the national V emission standard across the city. Over 28,000 new-energy vehicles were put into use by 2015 and won the city the Urban Transportation Leadership Award.

By April 13, 2016, the total volume transaction of carbon emission reached 400 million yuan and the transaction was over 10 million tons.

GREEN LIFESTYLE

Last year, several activities focusing on promoting low-carbon lifestyle have been held. Citizens were encouraged to participate in events such as low-carbon cycling, visiting environment-friendly buildings and Earth Hour.

In 2015, over 11.37 million square meters of environmental-friendly buildings were completed in Shenzhen, adding up to 33 million square meters in total. The number and scale of environmentally-friendly buildings of Shenzhen continues to top the nation's large cities.

ENVIRONMENTAL PROTECTION

In 2015, the city's air quality reached Level 2 of the national standards. A total of 340 days were rated as "good" or "basically good." Drinking water quality reached the national standards. Standards were met for 100% of the drinking water in the city's major reservoirs. The non-hazardous treatment rate of urban waste was 100%.

ECOLOGICAL GARDEN CITY

Shenzhen, dubbed City of Parks, has a pleasant natural environment. It has 889 parks which cover 181 square kilometers. The urban greenbelt

coverage is 45.07%. The per capita green land was 16.84 square meters. Shenzhen has won domestic and international awards and recognitions including Nations in Bloom, UNEP's Global 500 Laureate Roll of Honor, National Hygienic City, National Model City for Environmental Protection, Model City for Protection of the Ozone Layer, National Greenery Model City and National Brilliant Tourism City.

GREENWAYS

Shenzhen built greenways totaling 2,400 kilometers in length in 2015. The ecological landscape belt, which is 187.2 kilometers long and covers 2,638 hectares, was finished. Shenzhen plans to spend 2 billion yuan in total on community park construction and build 300 community parks till 2018, increasing the coverage of park greenbelt service to 95% and the coverage of tree-lined roads to 95.6%.





SHENZHEN PROFILE 2016

FINANCIAL SERVICES

Shenzhen is a financial hub of China, with the financial industry comprising a hefty portion of the city's GDP. Shenzhen ranked 23rd among the world financial centers, according to the Global Financial Centers Index 18 that was released in September 2015. Shenzhen was the 15th most competitive financial center worldwide based on the Xinhua-Dow Jones International Financial Centers Development Index (IFCD) in 2015.

FINANCIAL INDUSTRY

In 2015, the add value of Shenzhen's financial industry reached 254.28 billion yuan, up 15.9% from the previous year, ranking third in China. The added value of the financial industry accounted for 14.5% of the city's GDP. The city's total assets of the industry amounted to 9.19 trillion yuan, ranking third in China. Shenzhen has 202 listed companies, ranking sixth in the country. The total market value of the listed companies reached 4.6 trillion yuan, ranking third in the country. Shenzhen has 378 financial institutions with the numbers of its banks, security institutions, insurance companies and foreign financial companies and employees ranking among the tops in China.

In 2015, the transaction scale of interbank monetary markets and bond markets achieved 63.45 trillion yuan, up 90.3% from last year, ranking third in China. The cross-border RMB transaction reached 1.38 trillion yuan in 2015. Since the launch of the cross-border RMB business, the total transaction was 4.31 trillion yuan with 153 countries and regions involved.

BANKING

By the end of 2015, total savings deposits in Shenzhen banks reached 5.78 trillion yuan, up 15.6% from the previous year and ranking third in the country. Loans reached 3.24 trillion yuan, up 15.4% from 2014 and ranking third in China. Shenzhen is the first Chinese city to provide cross-border RMB loan service. By the end of 2015, the recorded Qianhai cross-border RMB loans reached 33.93 billion yuan, accounting for 40% of the country's total.



SECURITIES INDUSTRY

As one of the centers of China's securities markets, Shenzhen is home to the Shenzhen Stock Exchange (SSE) — one of the two stock exchanges on the Chinese mainland. By the end of 2015, 1,746 firms were listed at the SSE. The total stock transaction of the SSE reached 122.5 trillion yuan, comprising a half of the total volume in China. Shenzhen has 19 security companies, ranking second in the country. The city has 24 fund companies, and the net value of the public offering of fund was 1.96 trillion yuan, up 86.34% from last year. The number of fund companies, the funds they managed, the total scale of the fund, and the net value of fund assets ranked second in China. Shenzhen has 13 futures companies, ranking third in China.

INSURANCE

Shenzhen insurance firms saw robust growth in 2015. The total premium income reached 64.76 billion yuan, growing 18% from 2014 and ranking fourth in the country. The number of insurance companies amounted to 22, and the insurance branches were 70. The total assets of insurance companies amounted to 3.17 trillion yuan, comprising one-fourth of that in China.

EQUITY INVESTMENT

Shenzhen's equity investment industry leads China. In 2015, the number of registered equity fund companies in Shenzhen amounted to 46,000, the total registered capital amounted to 2.8 trillion yuan. The Qianhai Equity Transaction Center started to operate in May 2013 with over 9,000 enterprises listed, making it a regional equity transaction center with the most listed enterprises in China. Shenzhen has become the pilot city to have Qualified Foreign Limited Partner and the registered capital is over 20 billion yuan.

FINANCIAL ENVIRONMENT

Shenzhen is one of the financial centers in China. With the rapid development of Shenzhen's economy and finance, the status of the financial industry as a pillar of its economy has been enhanced and strengthened since Shenzhen was established as a special economic zone over 30 years ago. The financial clusters include Futian, Luohu and Qianhai Shenzhen-Hong Kong Modern Service Industry Cooperation Zone. Representative enterprises include China Merchants Bank and Ping An Insurance Company of China. The city's Internet payment, loans, equity crowdfunding and other Internet finances top other cities on the Chinese mainland. By the end of 2015, Shenzhen had 20 third-party payment companies and 712 P2P platforms. Representative companies include Qianhai WeBank.



SHENZHEN PROFILE 2016

MODERN LOGISTICS

The overall competitiveness of logistics in Shenzhen leads other cities in China, with an operating efficiency close to the standards of second-tier developed countries.



BASICS OF LOGISTICS

The logistics industry in 2015 yielded 178.27 billion yuan of added value, growing 9.35% from 2014 and accounting for 10.19% of the city's GDP, which indicates the logistics industry's increasing support to the city's economy. In 2015, the societal logistics expenditure was more than 233.19 billion yuan, up 2.81% from 2014, comprising 13.32% of the city's GDP.

LOGISTICS COMPANIES

By the end of 2015, there were 85 key logistics enterprises in Shenzhen. The traditional service of logistics has been speeding up its transformation towards third-party logistics and supply chain management. Many enterprises with supply chain management and large numbers of leading enterprises in third-party logistics have set up their headquarters in Shenzhen, making the logistics management efficiency of the city reach the level of moderately developed countries. SF Express is the largest private express enterprise in China; China Merchants Logistics, whose assets rank first among all third-party logistics enterprises, owns a network of logistics distribution that covers all third-tier cities and above.

FIVE LOGISTICS PARKS

Shenzhen is home to five major logistics parks: Yantian, Longhua, Pinghu, Sungang-Qingshuihe and airport logistics parks. By the end of 2015, several logistics park projects had been built, including Eternal Asia Supply Chain Industrial Base, Yuehai Global South China Logistics Supply Chain (Phase II), South China International Logistics Center, Haijixing International Agricultural Product Logistics Hub.

CHINA (SHENZHEN) INTERNATIONAL LOGISTICS & TRANSPORTATION FAIR

The 2015 China (Shenzhen) International Logistics & Transportation Fair, jointly organized by the Ministry of Transport and Shenzhen Municipal Government, was held from Oct. 14-16 at Shenzhen Convention and Exhibition Center. The exhibition provided 15 display areas and 1,950 booths, with an exhibition area of 60,000 square meters. Twelve high-end forums were also held. It attracted 130,000 visitors and purchasing agents from 70 countries and regions.

A long-exposure photograph of a Shenzhen street at night. The street is filled with light trails from cars, creating a sense of motion. On either side of the street are modern buildings, some with illuminated facades. In the background, two prominent skyscrapers stand out against the dark sky. The overall scene is a vibrant representation of a modern, bustling city.

SHENZHEN PROFILE 2016

CULTURAL INDUSTRY

Since 2003, when Shenzhen took the lead in China for establishing strategies for developing a culture-based city, the local cultural and creative industries have achieved robust growth, with an annual growth rate of more than 20%. The cultural and creative industries yielded an added value of 175.7 billion yuan in 2015, among the highest in the country. From 2004 to 2014, the added value produced by the cultural and creative industries accounted for 4.6% to 10% of the city's GDP. The sector has become an important engine for rapid and healthy economic development.

Cultural Innovative Development

At the beginning of 2016, the Shenzhen Cultural Innovative Development 2020 Plan (2020 Plan) was passed. The 2020 Plan is the guidance to the cultural development of the city for the following five years. It aims to help enhance the city's comprehensive cultural strength and build a modern, globalized, innovative city with a strong soft power.

Highlights of the 2020 Plan

Shenzhen will explore the possibility of setting up a mechanism to protect unmovable cultural relics. The city will push forward the construction work to protect relics such as Nantou Ancient Town, Dapeng Fortress and Dawan Ancestral Residence. The city will try to find innovative ways to carry on and develop its intangible cultural heritage and other cultural traditions.

Shenzhen will set up a platform for social science research and think tanks. The city will implement a program to invite famous researchers to work at local academies and schools, introducing more visiting scholars and young scholars, and setting up postdoc stations. The aim is to increase the number of social science talents by 10-20% each year.

Shenzhen will try to hold a series of influential cultural festivals such as the World Choir Competition. It is planning to organize an international science and technology film festival, a Belt and Road national music festival, and a Shenzhen international photography competition.

The city will encourage original cultural and art works. It hopes to encourage local companies to produce films with box office revenues surpassing 100 million yuan, create a song with national influence, compose a piece of quality symphonic work, create a popular show that tours at home and abroad, produce a TV entertainment show that ranks among the Top 5 in China and produce at least one quality TV series. The city will further the reform in local art performance companies, planning to set up an opera house and a drama theater. It will also encourage private companies to join the performance industry.

It will push forward the establishment of Shenzhen Internet authors' association to support the creation of online dramas, music, comics and animation.

The city will build a batch of key cultural facilities, some of which can be new landmarks. It will build a contemporary art and urban planning museum and a cultural and art center besides upgrading the existing venues. The aim is to gradually form two to three modern and international culture-themed blocks.

The city will offer more digital services in culture-related areas. For instance, free Wi-Fi will cover all cultural venues; museums, cultural centers, art galleries, libraries and book cities will have their collections accessible online. Social media and apps will be used more at public cultural institutions to make it more convenient for residents to use their services. It will push forward the building of a city-level big-data platform where people can get one-stop, interactive and tailor-made services of public cultural resources. The city will issue up to half a million "Cultural Shenzhen" bankcards which will offer discounts for culture-related expenses.

It will launch a "key project-driven" strategy to upgrade the cultural sectors. The city government will join forces with district governments to support one project of each district, including the international art exhibition center, Dafen Oil Painting Base, Fantawild Cultural Innovation Park, Huayi Brothers Cultural Town and Shenzhen movie cultural and creative park. The city will build 20 city-level cultural and creative parks and two to three national-level cultural parks.

The city will improve national-level industry service platforms, focusing on streamlining the existing resources in cultural industries. It will push the Shenzhen Cultural Exchange to launch a news and publishing platform and a registering and trading platform for film and video copyrights. The city aims to build a Cultural Silicon Valley to set up a good example of combining culture with high-tech. It will build a Belt and Road service platform and a cultural foreign trade service platform. It will also build a





Guangdong Provincial Digital Publishing Base in the city, which will help form a digital publishing industrial chain. It will push for the birth of a culture bank in Qianhai, build a national-level culture-in-association-with-finance pilot zone, and push for the China Cultural Industrial Investment Fund to invest in at least three cultural and creative companies.

INDUSTRIAL BASES

With 42 cultural and creative industrial parks and 20 cultural and creative industrial bases, Shenzhen has formed a clustered cultural and creative industry. There are 13 State-level model bases for the cultural industry, covering areas including creative design, cultural software, animation and games, new media, cultural information services, intangible cultural heritage, high-end arts and crafts, digital publishing, cultural tourism, high-end printing, and industrial education and training.

SECTORS WITH A COMPETITIVE EDGE

Shenzhen is where China's modern graphic design industry was born. Local industrial design and indoor design take a large percentage of the

national market. Animation and gaming industries, cultural software services, Internet information services, digital TV and digital audio industries have gained momentum in growth. Shenzhen is home to China's largest high-end printing industry, taking 60% of the national market.

CITY OF DESIGN

Shenzhen was accepted as a member of the Creative Cities Network by UNESCO on Nov. 19, 2008, and named a UNESCO City of Design, becoming the first Chinese city to win the honor. It was the sixth city in the world to earn the title.

ICIF

Cosponsored by the Guangdong Provincial Government, Shenzhen Municipal Government and State institutions, the annual China (Shenzhen) International Cultural Industries Fair (ICIF) is certified by the UFI. The only State-level cultural expo in China, it is held in Shenzhen each May.

CULTURAL ASSETS AND EQUITY EXCHANGE

Shenzhen Culture Assets and Equity Exchange was established in 2009. The Chinese Cultural Industry Investment Fund has Shenzhen as its second-largest shareholder. Shenzhen has become one of the most important centers for the exchange of culture assets and equity exchange as well as investment and financing services in China.

INTERNATIONAL CULTURAL TRADE BASE

In December 2013, Shenzhen Creative Information Hub built the national International Cultural Trade Base and made it the third base that was granted by the Ministry of Culture after Beijing and Shanghai and the first of its kind in South China. The base will utilize State preferential policies, international trade channels and international communication platforms to create a cultural trade service chain highly integrated with cultural and creative industries.

DAFEN OIL PAINTING VILLAGE

Located in Buji Subdistrict, Longgang District, the 4-square-kilometer village is the world's largest mass producer of oil paintings, essentially an art factory. Originally conceived by Hong Kong businessman Huang Jiang, who began production with a dozen artists in 1989, the village has grown in leaps and bounds over the past 20 years. About 15,000 artists and craftsmen work in more than 40 factories and 800 studios and workshops.

GUANLAN PRINTMAKING BASE

Located in Bao'an District, the base perfectly combines modern printmaking with traditional Hakka buildings. It has become a State-level model base with a sound environment and good economic returns.

SHENZHEN PROFILE 2016

CITY OF INNOVATION

Shenzhen is a city born for innovation, and the key to its quick rise lies in its capability of continuous innovation. In the early years of the Shenzhen Special Economic Zone, Shenzhen took the lead in making breakthroughs and disseminating new ideas by creating "firsts" for China's reform and development, such as issuing China's first stock and holding and China's first land auction. During the transitional period of development, Shenzhen once again successfully transformed itself into a pioneer of innovative development when China's economy is under the new normal phase, becoming a city of makers and a city of innovation.



JOINT DEVELOPMENT OF FOUR SECTORS

As the first national innovative city and a State demonstration area of independent innovation, Shenzhen advanced in 2015 the notion of reinforcing the joint development of innovation, entrepreneurship, venture capital investment and makers to build the city into a modern international innovative city.

CITY OF INNOVATION

In 2015, Shenzhen's PCT applications reached 13,300, up 14.3% from the previous year, topping large and medium-sized Chinese cities for 12 consecutive years. The patent ownership per 10,000 people reached 73.7, topping Chinese cities. In 2015, Shenzhen took four seats out of the 10 Chinese on Forbes' list of China-U.S. innovative figures. Two Shenzhen research achievements were selected for the 2014 China's scientific progresses. Shenzhen has become an innovative city of China, as well as the world. Innovation has become a synonym for Shenzhen.

CITY OF VENTURE CAPITAL INVESTMENT

As early as 2013, Shenzhen had 2,524 venture capital institutions and management funds of 300 billion yuan, accounting for one-third of the national total. Of the more than 3,500 enterprises invested by Shenzhen venture capital institutions, over 300 got listed on domestic and overseas markets. Among the 355 enterprises listed on the growth board ChiNext, 238 enterprises had venture capital investment, accounting for 67.04% of the ChiNext enterprises. Of the 238 enterprises, 96 were invested by Shenzhen's venture capital institutions, accounting for 40.34%.

Shenzhen will further the multi-level development and reform of its financial system, and will expand the scale of venture capital investment, build a city of venture capital investment, and promote the cluster development of venture capital investment and private equity funds.

CITY OF ENTREPRENEURSHIP

The spirit of entrepreneurship was engraved in Shenzhen from the moment of its birth, supporting Shenzhen's rapid development and continuous innovation. As a rising city, Shenzhen has built its prosperity on the spirit of entrepreneurship, incubating a group of famous private enterprises, including Huawei, ZTE, Tencent, BYD etc. The reform of business registration system, which started from March 1, 2013, further invigorated the market of startups, breeding a large number of enterprises of various sizes. In the same year, Shenzhen's commercial subjects exceeded 1 million, which means that there was one commercial subject among every 13 citizens and one enterprise for every 26 citizens. Shenzhen lives up to its reputation as a city of entrepreneurship.

CITY OF MAKERS

In recent years, the number of makers in Shenzhen has been growing drastically. Many institutions have gained much fame and influence both domestically and overseas, including Chaihuo Maker Space, Makeblock and Sseed Studio. Huaqiangbei, as depicted in the "Map of Makers," has become one of the top collecting and distributing centers of electronic parts and components in Asia, providing a platform for the most creative minds around the world. Even the largest innovative hardware incubator from the Silicon Valley, HAXLR8R, has joined this thriving market. It has been decided that a Maker Week is held every June in Shenzhen. A huge platform will be built to connect makers and suppliers, drawing the attention of enterprises and venture capitalists, providing better service for makers, and helping makers turn their innovative ideas into reality to realize their makers' dreams.



SHENZHEN PROFILE 2016

EMERGING INDUSTRIES OF STRATEGIC IMPORTANCE

Emerging industries of strategic importance including biology, Internet development, new energy, new material, cultural and creative industries and new-generation information technology are becoming the new engines for Shenzhen's development. The future industries such as the marine industry, aerospace and aviation industry, life health industry, robot and smart wearable devices will become the new incentives and their industrial scale will be 400 billion yuan.

INDUSTRIAL BASES

Shenzhen has placed importance on the development of biology, Internet, new energy, new material, cultural and creative industries, and new-generation information technology industries. Construction of 23 industrial bases for emerging industries of strategic importance is under way. In 2015, the output value of the emerging industries reached 521.55 billion yuan. The research professionals were 97,400.

FINANCIAL SUPPORT

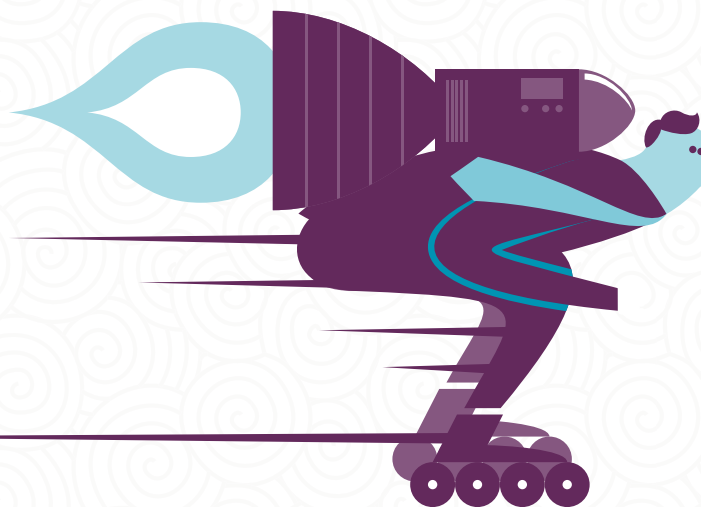
From 2011 to 2020, Shenzhen will spend 21.5 billion yuan on the construction of seven emerging industries. In 2016, the Shenzhen government plans to invest 5 billion yuan in these industries.

INDUSTRIAL DEVELOPMENT

In 2015, the added value of the major emerging industries in Shenzhen reached 700.35 billion yuan, up 16.1% from the previous year. The industrial scale of the major emerging industries increased by 22.4% from the previous year to 2.3 trillion yuan. The proportion of the added value of the industries to Shenzhen's GDP is more than 40%, which shows that they are becoming the major engines for Shenzhen's economy. As the industrial scale of the industries expanded rapidly, their economic returns also increased significantly.

In 2015, Shenzhen's R&D investment was 70.9 billion yuan, comprising 4.05% of the city's GDP. The investment goes side by side with that of Israel and South Korea. The number of Shenzhen's PCT (Patent Cooperation Treaty) applications totaled 13,308, accounting for almost 50% of the national total. There are now 1,283 innovative platforms headquartered in Shenzhen and, in 2015 alone, 176 new platforms were established. Tencent, ZTE, Salubris and BYD won the China Gold Patent Award in 2015, which accounted for 20% of the awardees. Shenzhen took four seats out of the 10 Chinese on Forbes' list of China-U.S. innovative figures.

Shenzhen has developed cutting-edge technologies in various fields, including telecommunication, DNA sequencing and new energy vehicles. Having emerged as the global leaders in 4G mobile network industry, Huawei and ZTE are also actively engaged in 5G innovation. In the area of biotechnology, BGI-Shenzhen is globally known for its excellence in new DNA sequencing as well as extensive biological information analysis. While SuperD's Glasses-free 3-D is recognized as a world-leading technique, Royole Corporation has



developed more than 200 core technologies of flexible display. What's more, over 85% of the world's metamaterials inventions are credited to Kuang-Chi Institute of Advanced Technology.

Shenzhen has witnessed an increasing number of local companies step onto the world stage. Huawei, one of the biggest telecommunications equipment suppliers and mobile phone manufacturers in the world, expected its business revenue in 2015 to reach 390 billion yuan. As an Internet giant, Tencent generated 102.86 billion yuan in revenue in 2015, up 30% from the previous year. BYD, one of the world's largest producers of new energy battery and vehicles, achieved a revenue in 2015 of 80 billion yuan, up 37.49% from the previous year. Also, a great many specialized companies have emerged in various fields. For instance, Hepalink plays a major role in the global market of Heparin-related products. DJI-Innovations occupies over 70% of the global share in the civilian UAV market, whereas UBTECH Robotics Corporation is a pioneer of intelligent humanoid robots, with a market value estimated at US\$1 billion.



SHENZHEN PROFILE 2016

CHINA (GUANGDONG) PILOT FREE TRADE ZONE QIANHAI & SHEKOU AREA OF SHENZHEN

On April 27, 2015, China (Guangdong) Pilot Free Trade Zone Qianhai & Shekou Area of Shenzhen was initiated. As a crucial part of the Guangdong Pilot Free Trade Zone, the Qianhai & Shekou area is a main part of the economic cooperation between Shenzhen and Hong Kong, covering an area of 28.2 square kilometers and including Qianhai and Shekou. The zone can be divided into three industrial areas: Qianhai Finance Business District, which mainly focuses on developing finance, information services, technology services and other professional services; Shenzhen West Port Area that centers around Qianhai Bay Bonded Area and focuses on developing port logistics, international trade, supply chain management and high-end shipping services; Shekou Business District, which will develop Internet information services, technology services and cultural and creative industries.

GENERAL FACTS OF THE AREA

Bordering Hong Kong and Macao, the Qianhai area is located in the western part of Nanshan Peninsula, Shenzhen, covering an estimated area of 15 square kilometers. Under the guideline of innovation, marketization and globalization and on the basis of one country, two systems, the Qianhai area adopts the principles of opening up and cooperation, mutual benefit and win-win, structural innovation, high efficiency, elite leadership, intensive development, coordinated planning and demonstration to make it a demonstration area of innovation and cooperation of Guangdong-Hong Kong modern service industry.

As the birthplace of China's reform and opening up, Shekou is a pilot field of structural and mechanism innovation and a pioneer of industrial transformation and upgrading. Not only is it the birthplace of many prominent enterprises, such as China Merchants Bank, Ping An Group and China International Marine Containers, but also the source of many inspiring and innovative concepts and slogans, which gained nationwide influence.

DEVELOPMENT GOALS

With the advantages and experiences of Shenzhen's marketization, legalization and globalization, the area aims at making full use of its pivotal function of the 21st-Century Maritime Silk Road, fully integrating the resources of Shenzhen and Hong Kong, gathering high-level global elements, prioritizing its finance, modern logistics, information services, technology and professional services, harbor services, shipping services and other emerging service industries of strategic importance, pushing forward the joint economic development of Shenzhen and Hong Kong, and building a center of productive service industries in the Asia-Pacific region, a key base of world service trade and an international hub port.

CHARACTERISTICS OF DEVELOPMENT

PRIORITY TO LEGAL SYSTEM

Drawing on the successful experiences of international financial centers in governing financial innovation and modern service industry development, Qianhai will make bold explorations in legislation, judicature, law enforcement, arbitration, intellectual property right protection and legal services under the basic framework of laws in China. It will strive for breakthroughs in the legal system of the free trade zone and build a legal framework and institutional system fitting its strategic positioning and in line with international trade and investment rules.

INTERNET PLUS ADMINISTRATIVE SERVICE

Aiming at the modernization of the management system and capability, the Qianhai & Shekou area will innovate the administrative management system, inducing the governmental management transformation from pre-approval to pro-supervision which is based on the public credit system. In order to do so, a set of administrative procedures will be eliminated, thus facilitating the decisive function of market in managing the resources.

COOPERATION BETWEEN SHENZHEN, HONG KONG AND MACAO

While opening itself to the global market, the Qianhai & Shekou area will further develop its associations with the service industries in Hong Kong and Macao, which include the efficient flow of service elements between Shenzhen and Hong Kong and the connectivity of the service markets. By improving the degree of liberalization of service trade, a well-organized, highly globalized and effective modern service system will be built, which will eventually turn the whole area into a dynamic engine of the service-oriented economy of Guangdong-Hong Kong-Macao Big Bay Area and a pivot of the global service trade bases.

FINANCIAL OPENING UP AND INNOVATION

Qianhai is approved by the State Council as a demonstration window of financial opening up and an innovative pilot area of cross-border RMB services. Financial innovation will be a crucial area that sets Qianhai apart from the rest of free trade zones. The Qianhai & Shekou area will make full use of its advantages in cross-border cooperation between Shenzhen and Hong Kong, fully supporting the construction of the Hong Kong offshore RMB center. Through financial opening up and innovation, a joint capital market between Shenzhen and Hong Kong will be built, facilitating the free flow and allocation of financial elements between Shenzhen and Hong Kong.

INTERNATIONAL TRADE

Qianhai Shekou Pilot Free Trade Zone will actively replicate and promote the experience in international trade and economic integration among Guangdong, Hong Kong and Macao. It will build a national Shenzhen-Hong Kong cross-border e-commerce system and a finance and lease system. It will also attract multinational companies to set up operative headquarters, logistics trade centers, settlement centers and an Asian-Pacific supply chain center.

SHIPPING AND LOGISTICS

Qianhai Shekou Pilot Free Trade Zone will take full advantage of China Merchants Group, which has 28 ports in 14 countries. The zone will upgrade its industries and port resources and build a world-class international pivot ports group.

A group of young girls, likely of Chinese descent, are performing a dance. They are wearing white tutus, white leotards, and white tights. Each girl has a flower crown on her head, made of small orange and yellow flowers. They are all looking towards the left side of the frame, with their hands raised in a synchronized gesture. The background is a plain, light-colored wall.

SHENZHEN PROFILE 2016

EDUCATION

Shenzhen is working to establish a modern education system with high degrees of impartiality, modernization, globalization and sustainable development. The system aims to build Shenzhen into an education-oriented city that provides strong intellectual support to its citizens' welfare and the city's future development.

BASIC EDUCATION

In 2015, Shenzhen had 1,489 preschool institutions, serving 438,500 preschool-aged children. There were 334 primary schools with 864,800 pupils. All school-age children went to school. The number of junior and senior high schools increased by 10 and reached 335, with 385,200 students, an enrollment increase of 1.72% from the previous year.

HIGHER EDUCATION

Shenzhen has 10 full-time institutes of higher learning and one part-time institute. Since the 12th Five-Year Plan was implemented, South University of Science and Technology of China and The Chinese University of Hong Kong Shenzhen Campus, which aim to become first-rate universities, were approved by the Ministry of Education.

Harbin Institute of Technology Shenzhen Graduate School, University of BIT-Moscow and Sun Yat-sen University Shenzhen Campus were approved to launch undergraduate education. A batch of universities and institutes with special characteristics, including the Institute of Tsinghua-Berkeley Shenzhen Campus, the University of Jilin-Queensland, HNU-RIT School of Design, Shenzhen, Georgia Tech-Tianjin University Shenzhen Institute, Science and Technology Shenzhen Campus and Melbourne Institute of Life Engineering Shenzhen Campus, Sino-America Innovation College of SCUT and Rutgers University, International Institute of Space and BGI College were set up jointly by well-known universities and enterprises from home and abroad. In 2015, Shenzhen's full-time institutes of higher learning had a total of 90,100 students.

Shenzhen University

Shenzhen University is a full-time comprehensive university. It was established in 1983 and accredited by the Academic Degree Evaluation Committee of the State Council for doctoral programs in 2006. The university now offers three accredited primary doctoral programs and nine secondary disciplines under its supervision; three centers for postdoctoral studies; one postdoctoral center; 34 accredited primary master's programs and 135 secondary disciplines under its supervision; 10 secondary disciplines; and 13 accredited professional master's programs. The university provides 84 undergraduate programs and 11 disciplines in categories including philosophy, literature, economics, law, pedagogy, science, engineering, management, medicine and history.

South University of Science and Technology of China

On Dec. 24, 2010, the Ministry of Education approved the plans for South University of Science and Technology of China. The ministry formally approved the establishment of the university on April 18, 2012. The university, allowed to enroll 8,000 full-time students every year, is under the supervision and management of Guangdong Province. The aim is to build the university

into a first-level international research institute and a base to cultivate innovative high-level talents. It now has enrolled 2,095 full-time students.

The Chinese University of Hong Kong Shenzhen Campus

On Sept. 28, 2012, the plan for establishing the university was approved by the Ministry of Education. On March 24, 2014, it was officially completed to enroll 11,000 full-time students. The first batch of majors includes marketing, international business and economics. It now has enrolled 912 full-time students.

University Town of Shenzhen

University Town of Shenzhen was jointly established by the Shenzhen Municipal Government and prominent Chinese universities as a teaching and research base to cultivate full-time postgraduates. Famous universities such as Tsinghua University, Peking University and Harbin Institute of Technology have already set up bases there. University Town of Shenzhen has so far enrolled 8,885 full-time students, including 1,222 pursuing doctorates and 7,498 pursuing master's degrees.

VOCATIONAL EDUCATION

Shenzhen boasts a unique and modern vocational education system which is adapted to economic and social development and tightly combines market demands with employment. The city has 3 higher vocational schools with 45,000 students, 23 secondary vocational schools and 36 State-level vocational education training bases. The employment rate reaches 98%. From 2011 to 2014, Shenzhen spent 13.1 billion yuan on vocational education.

LIFELONG EDUCATION

Shenzhen is making effort to build a city of learning for all and learning for lifetime. In 2015, over 40,000 students were enrolled in Shenzhen Open University; over 670,000 students participated in the self-study examination. There are 25 city-level community colleges, among them three are specialized colleges. There are also five district-level community colleges and 38 subdistrict-level community colleges. Shenzhen has been designated as a national model city of learning.

INTERNATIONALIZED EDUCATION

International Schools Shenzhen has seven international schools: Shekou International School (SIS), QSI International School of Shekou (QSI), KIS International (KIS), Shenzhen American International School (SAIS), the Japanese School of Shenzhen, Shenzhen Nanshan International School and BASIS International School.

Schools for Hong Kong Children Shenzhen Oriental School for Hong Kong Children (originally Guangdong School for Hong Kong Children), Luohu School for Hong Kong Children. There are nine schools offering classes for Hong Kong children.

Expatriate Teachers and Students Shenzhen has more than 5,000 expatriate students.



SHENZHEN PROFILE 2016

SPORTS

Shenzhen is expanding the construction of sports facilities to promote athletics and perfect a system of public health to ensure the physical wellness of its people. Competitive sports have been upgraded at a fast speed, and many athletes have won prizes in major national competitions. Shenzhen has invited CBA Marco Polo Basketball Club and Bayi Women's Volleyball Club to settle in the city. The city successfully hosted the 26th Summer Universiade in 2011.

SPORTS AND FITNESS

Shenzhen is conducting widespread public fitness programs. About 88.5% of its residents meet national standards of fitness. Shenzhen conducts more than 1,600 sports and fitness activities each year, with 18.6% of adults involved in exercise three or more times a week.

SPORTS VENUES

Shenzhen's sports venues occupy more than 12 million square meters in total, and public fitness facilities cover nearly 4 million square meters.

Shenzhen Sports Center Located in Futian District, the center occupies 278,000 square meters. It includes the 6,500-seat Shenzhen Gymnasium, with floor space of 21,200 square meters; the 30,000-seat Shenzhen Stadium, with floor space of 411,690 square meters; and the Shenzhen Swimming and Diving Natatorium, which has more than 4,000 seats and floor space of 54,300 square meters.

Universiade Center The main competition venue for the 26th Summer Universiade in 2011, the sports center is located in central Olympic New Town in Longgang District. The center is composed of a 60,000-seat stadium, a gymnasium with 18,000 seats, a swimming hall seating 3,000 and subsidiary facilities including a plaza, an underground parking garage and a stadium for warm-up training.

Shenzhen Bay Sports Center The Shenzhen Bay Sports Center resembles a huge cocoon lying near the sea. It is a comprehensive sports facility that held the opening ceremony of the 26th Summer Universiade. The sports center includes a stadium of 20,000 seats, a gymnasium of 13,000 seats, a swimming hall, a sportsmen's service center, a sports-themed park and commercial facilities.

SPORTS TRAINING

Shenzhen's sports training system includes two city-level professional training schools including Shenzhen Sports School and Shenzhen Physical Culture and Sports Team; eight sports schools for amateurs at all levels; 40 provincial-level senior high schools specializing in physical education; 33 city-level experimental schools offering high-level physical education; and 194 city-level schools specializing in physical education. The system offers training to more than 14,000 people currently.



SPORTS INDUSTRY

Home to the first national-level sports industry base in China and more than 6,000 sporting goods manufacturers and trading enterprises, Shenzhen has a growing sports industry. The city hosts sports events including the China Cup International Regatta, WTA and ATP International Tennis Shenzhen Open Tournament and Shenzhen International Marathon.

SHENZHEN FOOTBALL CLUB


Shenzhen established its football team in 1994, which won the championship of the first China Super League season and took third place in the 2005 AFC Champions League. Learn more at: www.shenzhenrby.com/.



SHENZHEN PROFILE 2016

PUBLIC HEALTH

In Shenzhen, medical institutions can be reached in a 10- to 15-minute walk for any resident, with 611 community health centers located throughout the city.



Shenzhen has set up a comprehensive public health network, with city, district and community public health institutions. By the end of 2015, the city had a total of 2,946 medical institutions (not including 611 community health centers), with 33,771 beds and 92,682 personnel.

MEDICAL INSTITUTIONS

Shenzhen People's Hospital Built in 1946, this largest hospital in Shenzhen originated from Bao'an County People's Hospital and has developed into a modern comprehensive hospital combining medical services, teaching, scientific research and health care. It is the largest 3A-rated hospital (the highest ranking in hospital classification by the Ministry of Health) in Shenzhen and features complete functions, advanced equipment, rational talent structure and strong technical power.

Shenzhen Second People's Hospital Established in 1979, Shenzhen Second People's Hospital is now a modern comprehensive 3A-rated hospital providing clinical services, disease prevention and rehabilitation services as well as serving as a teaching and research base. It is equipped with high-tech equipment such as MRI, DSA, spiral CT and color ultrasonic.

Peking University Shenzhen Hospital This modern, comprehensive 3A-rated hospital was built by the Shenzhen Municipal Government in cooperation with Peking University with an investment of 450 million yuan. It has become one of the most influential medical institutions,

featuring complete functions, advanced equipment, rational talent structure and strong technical power.

Shenzhen Traditional Chinese Medicine Hospital A large, comprehensive hospital for traditional Chinese medicine built in 1975, the hospital provides medical services, disease prevention service care, health care and medical rehabilitation services as well as serving as a teaching and scientific research center. It is a 3A-rated hospital for traditional Chinese medicine.

The University of Hong Kong-Shenzhen Hospital Located at the Shenzhen Bay, The University of Hong Kong-Shenzhen Hospital is a comprehensive public hospital invested fully by the Shenzhen Municipal Government. The hospital utilizes the modern management mode introduced by The University of Hong Kong and undertakes duties of medical services, research and teaching. The hospital began a trial operation in July 2012 and now offers services provided by departments of general practice, medicine, surgery, gynecology, pediatrics, orthopedics and traumatology, etc.

Shenzhen Kangning Psychiatric Hospital It is a 3A-rated psychiatric hospital built in 1980. The hospital offers psychiatric therapy, education, research and prevention. The hospital has 560 beds.

PUBLIC HEALTH INSTITUTIONS

Shenzhen CDC Shenzhen Center for Disease Control and Prevention (CDC) is a government-sponsored public health institution set up in 2002. Operations began in May 2003.

Shenzhen Center for Chronic Disease Control A government-sponsored institution established in 1989, Shenzhen Center for Chronic Disease Control is mainly responsible for the prevention and control of chronic diseases.

Shenzhen Health Education and Promotion Center The center promotes healthy lifestyles by regularly organizing health awareness activities.

FOOD SAFETY

In recent years, the Shenzhen Municipal Government has upgraded food safety monitoring. The city's food and drink industry and all public canteens have adopted a classified management system of food safety.



SHENZHEN PROFILE 2016

TOURISM AND LEISURE

Shenzhen is a coastal cosmopolitan tourist city. Visitors can travel freely and quickly within a one-hour drive and appreciate the modern young city's beauty and ethos.



TOURISM INDUSTRY

One of the most important and profitable tourist cities in China, Shenzhen is regarded as the capital of Chinese theme parks and tourism innovation. With sea, land and air checkpoints, Shenzhen has a safe, quick and convenient tourist transport network. Eating, living, traveling, shopping and recreating in Shenzhen are made easy and fun with ample tourism infrastructure and products and food from around the world. In 2015 the city has received 116.3 million tourists, up 7.65% from the previous year. The revenue of tourism reached 124.48 billion yuan, up 14.03%. The foreign exchange earnings from tourism was US\$4.97 billion, up 8.8% from 2014.

A CITY OF TRAVELERS

With Shenzhen's constantly improving living standard, Shenzhen people like to travel. About 3 to 4 million people choose to travel during the Golden Week in October and Chinese New Year holidays every year. For several years, it has been ranked as one of the top five cities with the highest number of people traveling outside the city in Golden Week by Ctrip.com, one of China's most popular websites specialized in travel information and services.

A TRAVELERS' HUB

Being China's largest port city and window of opening up to the outside world, Shenzhen saw 239 million people traveling across the border in 2015. The policy of allowing mainland citizens to travel to Hong Kong and Macao on individual basis made Shenzhen an intermediate point for people's trips to Hong Kong. Statistics show that more than 60% of people traveling from mainland cities to Hong Kong

or overseas destinations via Hong Kong choose to make a stopover in Shenzhen. Overseas visitors entering China through Shenzhen checkpoints also choose to make Shenzhen one of their destinations.

SCENIC SPOTS

There are more than 100 scenic spots around the city, including man-made theme parks, natural ecological parks, coastal resorts, shopping plazas and historic sites. Overseas Chinese Town is one of China's first 5A-rated scenic spots, the highest national level.

THEME PARK CAPITAL

Shenzhen is famed as a theme park capital. The Window of the World, Splendid China China Folk Culture Villages, Happy Valley and OCT East theme parks are the epitome of blending Chinese and world cultures. Among them, Happy Valley has seen branches set up in Beijing, Chengdu and Shanghai. Other than these, Shenzhen is also home to the first safari park in China, the first farm featuring an environmental protection theme — Evergreen Resort.

BEAUTIFUL COASTLINE

Shenzhen has a large number of coastal scenic spots, including Shenzhen Bay, Mangrove Nature Reserve and a 15-kilometer coastal leisure corridor in the west, with Zhongying Street, Dameisha and Xiaomeisha beaches, Sea World and Dapeng Peninsula in the east. The coastline along Dapeng Peninsula was named one of the eight most beautiful coasts in China by Chinese National Geography magazine. Shenzhen has more than 20 public beaches, some of which are linked by seaside walkways.

NATURAL BEAUTY

OCT East, a national ecological resort occupying about 9 square kilometers, aims to provide visitors with an opportunity to escape from the bustle of city life and return to nature. Tourists can also feel tranquility at other local spots including Fairy Lake Botanical Garden, 943.7-meter Wutong Mountain, the mountainside Hongfa Temple, Evergreen Resort, Waterlands Resort, Guangming Farm, Qiniang Mountain and Fenghuang Mountain.

CREATIVE CULTURE

In recent years, Shenzhen has completed the structure of its tourism products and created a series of new cultural scenic spots through the integration of tourism resources. These new tourism destinations include OCT-LOFT, F518 Idea Land, Shenzhen Museum, Dafen Oil Painting Village, Cultural Exhibition Palace, Bantian Handmade Culture Park and Guan Shanyue Art Museum.

Shenzhen is not only a modern city with a history of reform, but also a city with an ancient civilization. New Stone Age ruins found in Xiantouling in Dapeng indicate that humans inhabited the area at least 6,700 years ago. There are 51 city-level protected sites containing cultural relics around Shenzhen, including the well-known Zhongying Street, Dapeng Fortress, Qing Dynasty Hakka architecture, Song Dynasty Young Emperor's Tomb and Chiwan Goddess Temple.

Shenzhen's list of intangible cultural legacies include 233 items covering categories ranging from folk culture, folk music, traditional dance, folk arts and folk customs to traditional craftsmanship and traditional medicine. Among these items, seven are State-level intangible cultural legacies: fish-lantern dance of Shatoujiao, traditional orthopedic skills of the Guo family of Pingle, Chinese kylin dance of Dachuankeng, Qixing lion dance of Songgang, kylin dance of Yongshengtang of Bantian and traditional ancestor-worshipping ceremony of Xiasha Village.

Shenzhen has 617 travel agencies, including 103 agencies providing international tours. Travel agencies have outlets all around the city.

Shenzhen is a city with rich resources in the golf industry. There are 15 golf clubs in Shenzhen. Fifteen golf driving ranges varying in size provide more than 700 bays. After 20 years of development, Shenzhen's golf industry has become a leader in China. The Mission Hills Golf Club, a 5A-rated tourist resort in China, is one of the biggest golf clubs in the world with 216 holes and 12 courses. It has hosted important international golf events like the Omega Golf World Cup and HSBC Golf Champions for years.

Shenzhen is renowned as a shopping paradise, with abundant choices of international luxury goods and local products at hand. The culturally diverse city offers a variety of foods, from Western cuisines to local street food. A profusion of shopping malls and department stores provides a pleasant atmosphere for shoppers.

Shenzhen's famous native produce and foods include Shajing oysters, Nanshan litchi, Xixiang shrimp, Fuyong fish, Nan'ao abalone, Longgang chicken, Pingshan oranges, Xili mangos, Songgang preserved duck, Gongming roast goose, Guangming young pigeon and more than 150 kinds of medicinal herbs.

Shenzhen serves some of the best food in the world. With thousands of eateries, visitors can taste delicious food representing countless cultures. Bar streets, including those in Shekou Sea World, Window of the World and Coco Park, all provide good choices for pubgoers at night.

There are more than 170 tourism-related and cultural festivals in Shenzhen, including Shenzhen Golden Coast Tourism Festival, Shenzhen Dapeng International Outdoor Carnival and Window of the World International Beer Festival. The Happy Valley International Magic Festival is one of the biggest magic festivals in the world, attracting top magicians from around the globe every year.

Shenzhen Golden Coast Tourism Festival Held in Yantian District in October and November every year, the festival includes events like Shenzhen (Dameisha) Beach Music Festival, Shenzhen Dameisha International Kite Festival and China (Shenzhen) International Boat Show. The festival is now an influential tourism event in the country.

Shenzhen Dapeng International Outdoor Carnival Held from September to November each year, the carnival is comprised of 14 activities and outdoor competitions, which attract tens of thousands of outdoor culture enthusiasts and nature lovers from Shenzhen and neighboring cities. The carnival has become a grand annual outdoor event of China.

Happy Valley International Magic Festival A big event that attracts magicians from around the globe, the magic festival has been held annually since 2000 at Happy Valley theme park in Shenzhen.



SHENZHEN PROFILE 2016

CULTURE AND ART

Shenzhen offers a comprehensive selection of public cultural facilities that provide splendid art displays. Elite artworks and vibrant popular culture make Shenzhen a cultural oasis.



Learn more on the Shenzhen Municipal Bureau of Culture, Sport and Tourism's official website <http://www.szwlt.gov.cn>

CITY OF LIBRARIES

Library network The Shenzhen government began to implement its strategy of building a city of libraries in 2003. Since then, a pioneer library network with rich resources, modern facilities and convenient services has taken shape and expanded. There were 620 public libraries in the city by the end of 2015, including three city-level libraries, eight district-level libraries and 609 branches of city- and district-level libraries and community reading rooms. There also are 240 self-service book-lending machines offering 24-hour service on city streets. The goal of establishing one community library for every 15,000 people has been realized.

Unified service platform All 234 public libraries in the city and the 240 self-service book-lending machines are connected by a network that provides unified service to readers citywide. The network is being expanded to include other public libraries. These public libraries, carrying the logo of "City of Libraries," share resources within the network. Through this network, readers can access the resources of all libraries with one library card.

Shenzhen Library As the center of library materials collection and utilization and of information resources development in the city, Shenzhen Library holds more than 8 million volumes of books and periodicals. It serves more than 10,000 readers daily and lends 3.8 million books each year. The library is open to the public and free of charge.

24-hour self-service book-lending machines The first of their kind in China, Shenzhen's 240 24-hour self-service book-lending machines are scattered around the city in large housing developments, industrial and high-tech parks, public cultural venues, office buildings, transportation hubs and Metro stations.

CITY OF PIANOS

Led by Shenzhen Arts School, Shenzhen's piano education level tops the nation. Piano education is growing more popular among Shenzhen primary and middle school students. So far, as a city of pianos, Shenzhen has cultivated many internationally famous musicians who won prizes in piano competitions, including Li Yundi, Zhang Haochen, Chen Sa and Zuo Zhang. Renowned piano performers and educators, such as Zhou Guangren, Dan Zhaoyi and Liu Shikun, have set up piano training and education bases in Shenzhen. According to statistics, there are around 400,000 pianos in the city. Shenzhen has more than 6,000 piano teachers and 300,000 young piano learners.

MUSEUMS, ART GALLERIES AND ENTERTAINMENT VENUES

Museums There are 41 museums (including memorial halls) around the city,



housing more than 60,000 cultural relics. The Shenzhen Museum broke ground in February 1984, opened in November 1988 and now houses more than 35,000 pieces. The New Shenzhen Museum, the country's first museum featuring the history of reform and opening up, opened on Dec. 25, 2008, in the east wing of the Civic Center. With floor space of more than 30,000 square meters, the new museum also displays examples of ancient local relics and folk customs.

Art galleries There are 14 public art galleries in the city. Two more are being built. With a total floor space of 38,000 square meters, the art galleries presented 320 exhibitions in 2015 and received more than 2.8 million visitors.

Theaters There are 20 theaters for performing arts in the city, covering more than 200,000 square meters of floor space and offering a total capacity of 30,000 seats.

Cultural halls There are 69 cultural halls throughout the city, occupying more than 300,000 square meters.

CULTURAL ACTIVITIES

Reading Month The Shenzhen Municipal Government has designated every November as Reading Month, a cultural extravaganza. It's the longest reading-themed festival in the world.

Creative December This event has been held every December since 2005 with the joint effort of the Publicity Department of the CPC Shenzhen Municipal Committee, Shenzhen Municipal Bureau of Culture, Sport and Tourism, Shenzhen Federation of Literary and Art Circles and the City of Design Promotion Office of Shenzhen. More than 100 events related to design, arts and culture, and architecture are held in forms of exhibitions, lectures, competitions and performances within the month.

Shenzhen & Hong Kong Bi-City Biennale of Urbanism\Architecture This event is sponsored by the Shenzhen Municipal Government and organized by Shenzhen Public Art Center. It is an interactive cultural event between Shenzhen and Hong Kong, the only international biennale that concerns on urbanism and urbanization in the world.

ICIF Art Festival An important part of China (Shenzhen) International Cultural Industries Fair, the ICIF festival displays shows by elite artists from home and abroad. The fair also is designed to provide an international platform for original works by Chinese artists and to prosper local literary and artistic creation.

China Shenzhen International Piano Concerto Competition Sponsored by the Shenzhen Municipal Government and organized jointly by Shenzhen Municipal Bureau of Culture, Sport and Tourism and Shenzhen International Culture Association, the competition is the third international piano competition approved by the Chinese Government, after China International Piano Competition and China Shanghai International Piano Competition. The first competition was held in 2006, and the second in 2011. The competition is held every three years and has become the highest-level international professional art competition since the city was built.

Shenzhen opera master performance project Organized by the Culture, Sports and Tourism Administration of Shenzhen Municipality since 2013, the project brings a wealth of authentic Chinese opera plays to the general public.

Spring festival arts care project This is a series of free art performances and exhibitions held annually during the Spring Festival to give citizens and migrant workers free access to cultural events. The project is sponsored by the Publicity Department of the CPC Shenzhen Municipal Committee and the Shenzhen Municipal Bureau of Culture, Sport and Tourism.

Performance seasons of Shenzhen Symphony Orchestra Shenzhen Symphony Orchestra has been staging summer and winter seasons since 1999. The orchestra gives more than 30 concerts every year.

Chinese and foreign performance season Hosted by the Shenzhen Performing Arts Company since 2003, it organizes approximately 20 performances a year.

Grand Theater Art Festival: Started in 1992, the festival is the first art festival named after a theater in China. The festival has been held for 19 years.

Art Vista It is a public event that includes art performances and lectures introducing folk music, Western-style music, opera, traditional Chinese literature and arts and is held at Shenzhen Grand Theater at 3 p.m. every Saturday afternoon. The event, sponsored by the Publicity Department of the CPC Shenzhen Municipal Committee, is organized by Shenzhen Grand Theater and Tianli Time International Performance Co.

Weekend Guangdong Opera This event invites Guangdong opera artists from Guangdong, Hong Kong and Macao to stage performances for Shenzhen people at Shenzhen Theater at 3 p.m. every Friday afternoon.

Beautiful Sunday Sponsored by the Publicity Department of the CPC Shenzhen Municipal Committee and Shenzhen Municipal Bureau of Culture, Sport and Tourism and hosted by Shenzhen Concert Hall, the Beautiful Sunday project provides free concerts staged at Shenzhen Concert Hall at 3 p.m. every Sunday.

Drama Sunday A cultural event supported by a special fund for Shenzhen's cultural activities, it allows people to attend free lectures on drama and drama performances. A total of 159 lectures and performances have been held since the first event was held in September 2011, attracting more than 60,000 people.

Shenzhen Autumn Community Culture and Art Festival It is an event held every other year since 1992 that highlights music and dance contests, painting and calligraphy exhibitions as well as art performances.

Shenzhen Migrant Workers' Cultural Festival To provide cultural events for migrant workers, the annual monthlong festival was launched in May 2005 and features shows, movies, lectures, exhibitions and sports games, attracting nearly 3 million people annually.

Shenzhen Children's Art Festival The festival is held every three years and targets children 6 to 16 years old.



SHENZHEN PROFILE 2016

PUBLIC SERVICES

Shenzhen has an efficient government service system and an advanced information network to provide a good environment for the city's economic development and people's daily lives.

GOVERNMENT MANAGEMENT

The government of Shenzhen has actively driven its own transformation of functions and strengthened the construction of a service-oriented government. Under the guidance of the motto “legal, responsible, shining and efficient government”, the government has improved itself in its administrative transparency and managing efficiency, in order to provide a fair, clear and law-governed environment for the progress of the society and the welfare of the citizens.

SAFETY AND SECURITY

In recent years, Shenzhen has significantly increased its police force and taken a series of measures to improve public safety. All police officers — including those who formerly had desk jobs— were required to conduct regular street patrols as of April 1, 2012, in an effort to further increase the number of police officers on city streets and police interaction with the community.

INTELLECTUAL PROPERTY RIGHTS PROTECTION

The Shenzhen government has adopted stringent protection of intellectual property rights as a leading development strategy to improve the city's investment environment and maintain market order. Everyone living in the city, including foreigners, has the same protection under domestic and international laws.

PUBLIC MEDIA

Shenzhen has an advanced public media network. The household rate of radio and TV coverage is 100%. There are 16 newspapers and 37 periodicals. It is convenient for residents to acquire all kinds of information from newspapers, magazines, electronic media and online media.

Shenzhen Press Group One of the largest modern press groups in China, Shenzhen Press Group owns 10 newspapers, five magazines, 17 websites and one publishing house. It has more than 6,000 employees.

Shenzhen Media Group With 12 TV channels, four radio frequencies and more than 20 business firms, Shenzhen Media Group is a key player in the local media industry and integrates advertisement, network transmission and service with new technologies and content.

Government website

Shenzhen Government Online: <http://www.sz.gov.cn>, English Portal EYESHENZHEN: <http://www.eyeshenzhen.com/>

News websites

Shenzhen News: <http://www.sznews.com> Tencent: <http://www.qq.com/>



TELECOMMUNICATIONS

Shenzhen has 797 post offices and a developed telecommunications system. Shenzhen is the center for express mail on the southern mainland, with an efficient and comprehensive network reaching every household. Many local companies are engaged in fixed and mobile telephones and Internet services. The fixed telephone users numbered 4.73 million by the end of 2015 and mobile users 29.96 million. The number of broadband users was 5 million and the number of 4G users was 11 million in 2015. Shenzhen is now pushing several projects: construction of increased telecommunications infrastructure; trial integration of telecommunications networks, cable TV networks and the Internet; development of a wireless city; construction of an information consumption pilot city; and construction of a national next-generation Internet demonstration city.

In 2015, the added value of the Internet industry reached 75.61 billion yuan, up 19.3% from 2014. The transaction volume of e-commerce reached 1.73 trillion yuan, up 14.56% from the previous year.

A group of people are riding bicycles on a paved path that is lined with lush green trees. The scene is bright and sunny, suggesting a pleasant day. In the foreground, a woman with long dark hair and sunglasses is smiling while riding. Next to her is a man in a bright green t-shirt and glasses, also smiling. To his right is a man in a red shirt and sunglasses. Further right is a man in a blue shirt and a brown vest, wearing sunglasses. In the background, several other people are riding bicycles, some in green shirts. The path is wide and appears to be a dedicated bike lane or a quiet street. The overall atmosphere is one of active, healthy living.

SHENZHEN PROFILE 2016

SOCIAL LIFE

The Shenzhen government has been increasing investment in infrastructure facilities to improve public services, quality of life and social welfare.



AVERAGE INCOME

The annual average salary paid to Shenzhen workers was 44,633.30 yuan in 2015, up 6.7% from the previous year.

CONSUMPTION

The per capita annual living expenditure last year was 32,359.2 yuan, up 9.8% from the previous year. The Engel coefficient, or proportion of income spent on food, was 32% for urban residents.

EMPLOYMENT

Since March 1, 2015, the city's minimum wage has increased to 2,030 yuan per month and 18.5 yuan per hour.

SOCIAL SECURITY

The city has established a public health insurance system that covers almost every resident. In 2015, 12.13 million residents were included in the basic health insurance system. A total of 8.71 million people bought the basic old-age pension, 9.99 million people bought work-related injury insurance and 5.95 million people bought birth insurance, up 1.3%, 1.1% and 2.4% respectively from the previous year.

SOCIAL WELFARE

Shenzhen takes the national lead to reform the present social welfare system and build a fair network that benefits most residents. By the end of 2015, Shenzhen had 30 welfare houses. There were 6,054 beds in the welfare houses. The basic living allowance was raised from 415 yuan to 800 yuan. In 2015, 36.88 million yuan of basic living allowance was given out.

WELFARE AND COMMUNITY ORGANIZATIONS

There were 10,100 social organizations in the city by March 31, 2015. Among them, 4,397 were welfare associations, 4,044 were NGOs and 132 were foundations.

In September 2015, 160,000 people and 896 institutions and programs attended the China Charity Fair organized by the Ministry of Civil Affairs, State-owned Assets Supervision and Administration Commission of the State Council, All-China Federation of Industry and Commerce, Guangdong Provincial Government and Shenzhen Municipal Government. At the fair, 438 projects reached cooperation agreements, involving 5.08 billion yuan.

CITY GUIDE

Exit-entry Administration for Foreigners

Shenzhen issues visas to foreigners to allow temporary visits, and green cards for permanent stays. Information regarding exit-entry issues concerning foreigners can be obtained through:

1. Website of the exit-entry administration division under the Shenzhen Municipal Public Security Bureau: www.sz3e.com/.
2. Inquiry hotlines: 84465490, 96897
3. A visit to the exit-entry administration office: Hall 2, exit-entry administration office, 4016 Jiefang Road, Luohu District, a five-minute walk from Grand Theater Metro Station
Hours: 9 a.m.-noon; 2 p.m.-6 p.m.

Translation Services

Foreign Affairs Office of the Shenzhen Municipal People's Government
Add: 2/F, Zone C, Civic Center, Fuzhong Road 3, Futian District, Shenzhen
Tel: (86-755) 82107160
Fax: (86-755) 82002512
Post code: 518035
Email: gongkai@szfao.gov.cn
Website: www.szfao.gov.cn/

Government Website

Shenzhen Government Online: www.sz.gov.cn/
English web portal: www.eyeshenzhen.com

Useful Numbers

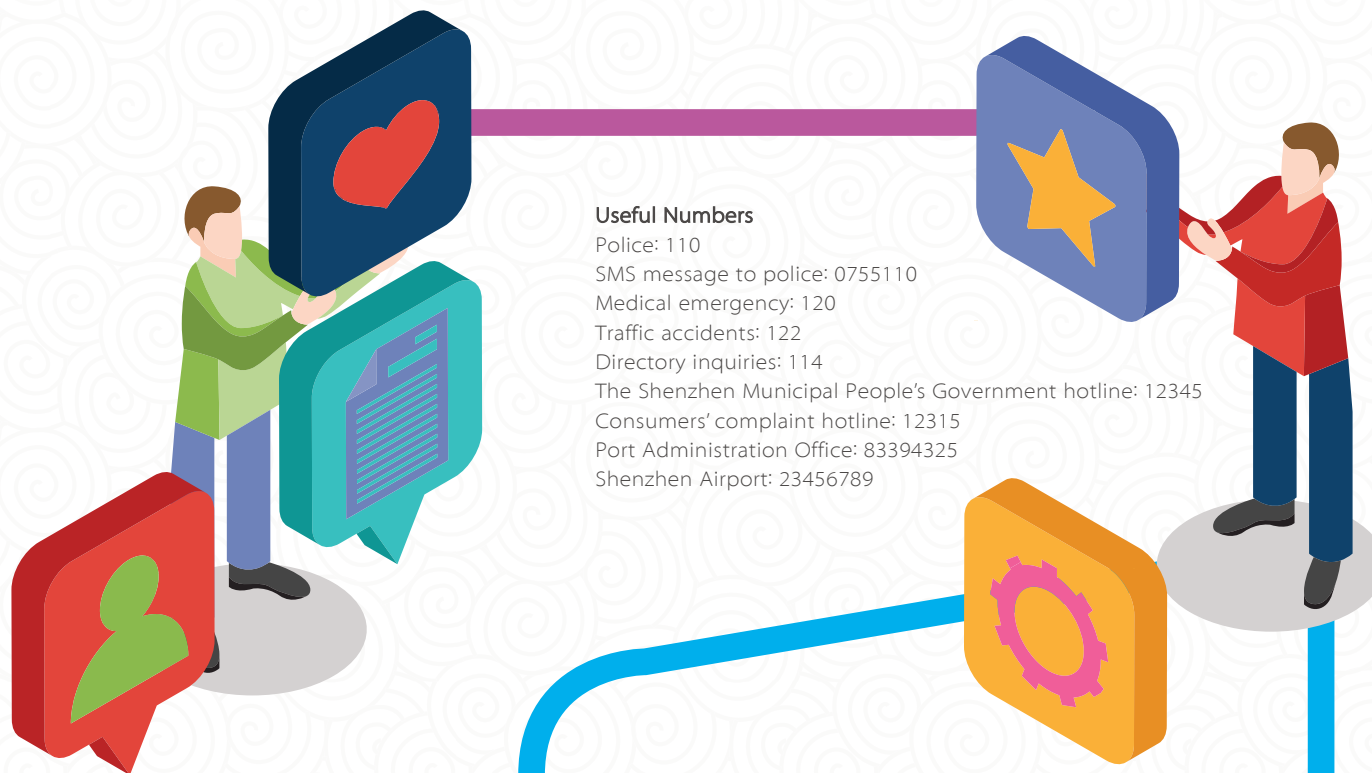
Police: 110
SMS message to police: 0755110
Medical emergency: 120
Traffic accidents: 122
Directory inquiries: 114
The Shenzhen Municipal People's Government hotline: 12345
Consumers' complaint hotline: 12315
Port Administration Office: 83394325
Shenzhen Airport: 23456789

Transport Service

Shenzhen Bus Group: 83161116
On-call taxi service: 96511, 83906888
Shenzhen Metro: 88960600

Ticket Service

E-ticket center of Shenzhen Railway Station: 95105105
Shenzhen Airlines: 95080
China Southern Airlines: 95539
Shekou Ferry Terminal, Hong Kong and Macao lines: 26691213
Shekou Ferry Terminal, domestic lines: 26695600
Long-distance buses (Luohu, Futian, Nanshan, Yantian, Donghu, Airport, Huanggang, Shenzhen North Railway): 95000
Long-distance bus website: www.sz95000.com/
Yinhu Bus Station: 96511



ACCOMMODATION

Shenzhen Wuzhou Guest House	Add: 6001 Shennan Boulevard, Futian District	Tel: (86-755) 82938000
Lafonte International Hotel Shenzhen	Add: Jingtian Road East, Futian District	Tel: (86-755) 83055555
Grand Mercure Oriental Ginza Shenzhen	Add: Zhuzilin, Shennan Boulevard, Futian District	Tel: (86-755) 83500888
Grand Skylight Hotel Shenzhen	Add: 3024 Shennan Road Central, Futian District	Tel: (86-755) 33969898
JW Marriott Shenzhen	Add: 6005 Shennan Boulevard, Futian District	Tel: (86-755) 22698888
Marco Polo Shenzhen	Add: Temeisi Plaza, Fuhua Road 1, Futian District	Tel: (86-755) 82989888
Shanghai Hotel	Add: 3032 Shennan Road Central, Futian District	Tel: (86-755) 83365288
Shenzhen Air International	Add: 6035 Shennan Boulevard, Futian District	Tel: (86-755) 88819999
The Ritz-Carlton, Shenzhen	Add: 116 Fuhua Road 3, Futian District	Tel: (86-755) 22222222
The Langham, Shenzhen	Add: 7888 Shennan Boulevard, Futian District	(Tel: (86-755) 88289888
JW Marriott Shenzhen Bao'an	Add: Intersection of Baoxing Road and Haitian Road, Bao'an District	Tel: (86-755) 23238888
Sheraton Dameisha Resort Shenzhen	Add: 9 Yankui Road, Dameisha, Yantian District	Tel: (86-755) 88886688
Airland Hotel	Add: 8 Yanmei Road, Dameisha, Yantian District	Tel: (86-755) 25062299
Novotel Shenzhen Bauhinia	Add: 2002 Qiaocheng Road East, Nanshan District	Tel: (86-755) 82829966
Nanhai Hotel	Add: 1 Gongye Road 1, Nanhai Boulevard, Shekou, Nanshan District	Tel: (86-755) 26692888
Fraser Place	Add: 1033 Nanhai Boulevard, Shekou, Nanshan District	Tel: (86-755) 26883333
The Venice Hotel Shenzhen	Add: 9026 Shennan Boulevard, Nanshan District	Tel: (86-755) 26936888
South China Harbor View Hotel	Add: 18 Nanxin Road, Nanshan District	Tel: (86-755) 26088736
Century Kingdom Hotel	Add: Baige Road, Buji, Longgang District	Tel: (86-755) 89969999
Nan'ao Hotel	Add: Shuitousha, Nan'ao Township, Longgang District	Tel: (86-755) 84428666
Sunshine Hotel	Add: 2001 Jiabin Road, Luohu District	Tel: (86-755) 82233888
The Westin Shenzhen Nanshan	Add: 9028 Shennan Boulevard, Nanshan District	Tel: (86-755) 26988888

Grand Hyatt Shenzhen	Add: 1881 Bao'an Road South, Luohu District	Tel: (86-755) 82661234
InterContinental Shenzhen	Add: 9009 Shennan Boulevard, Nanshan District	Tel: (86-755) 33993388
Seaview O.City Hotel Shenzhen	Add: 3-5 Guangqiao Street, Overseas Chinese Town, Nanshan District	Tel: (86-755) 26602222
Shangri-La Hotel, Shenzhen	Add: 1002 Jianshe Road, Luohu District	Tel: (86-755) 88284088
Futian Shangri-La, Shenzhen	Add: 4088 Yitian Road, Futian District	Tel: (86-755) 88330888
The Panglin Hotel Shenzhen	Add: 2002 Jiabin Road, Luohu District	Tel: (86-755) 25185888
999 Royal Suites & Towers	Add: 1001 Shennan Road East, Luohu District	Tel: (86-755) 25130999
The Pavilion	Add: 4002 Huaqiang Road North, Futian District	Tel: (86-755) 82078888
Four Points by Sheraton Shenzhen	Add: 5 Guihua Road, Futian Free Trade Zone, Futian District	Tel: (86-755) 83599999
Sheraton Shenzhen Futian Hotel	Add: Great China Exchange Square, Fuhua Road, Futian District	Tel: (86-755) 83838888
Golden Central Hotel Shenzhen	Add: 3037 Jintian Road, Futian District	Tel: (86-755) 23993333
Grand Skylight Garden Hotel Shenzhen	Add: Chengshi Building, Tianmian, Futian District	Tel: (86-755) 82816666
Kempinski Hotel Shenzhen	Add: Haide Road 3, Houhaibin Road, Nanshan District	Tel: (86-755) 88888888
Holiday Inn Shenzhen Donghua	Add: 2307 Donghua Park, Nanhai Boulevard, Nanshan District	Tel: (86-755) 86193999
Kingkey Palace Hotel	Add: 90 Yankui Road, Dameisha, Yantian District	Tel: (86-755) 82688888
Interlaken OCT East Shenzhen	Add: OCT East, Dameisha, Yantian District	Tel: (86-755) 88883333
Hengfeng Haiyue International Hotel	Add: Xincheng Plaza, Zone 80, Baocheng, Bao'an District	Tel: (86-755) 27922222
The Pavilion Longgang	Add: 168 Dayun Road, Longgang District	Tel: (86-755) 89899888
Four Seasons Hotel Shenzhen	Add: 138 Fuhua Road 3, Futian District	Tel: (86-755) 88268700
The St. Regis Shenzhen	Add: 5016 Shennan Boulevard East, District	Tel: (86-755) 61280288
Hilton Shenzhen Shekou Nanhai	Add: 1177 Wanghai Road, Nanshan District	Tel: (86-755) 21628888
Hilton Shenzhen Futian	Add: 1003 Shennan Boulevard, Futian District	(Tel: (86-755) 21308888

RECOMMENDED ONE-DAY TRIPS

TOUR OF CULTURAL RELICS

- Itinerary 1:** Hehu New Residence > Dapeng Fortress > Hesou Village > Xichong Beach
- Itinerary 2:** Civic Center > Old Shenzhen Museum > Zhongying Street > Dawan Hakka Residential Building
- Itinerary 3:** Civic Center > Old Shenzhen Museum > Nantou Ancient City > Chiwan Goddess Temple > Sea World
- Itinerary 4:** Dapeng Fortress > Baguang Village > Dongmen Old Street > Siyue Library

CULTURAL TOUR

- Itinerary 1:** Dafen Oil Painting Village > Nanling SAC Park > Bofook Lilang Jewelry Culture Industry Zone > Light Industrial Products City
- Itinerary 2:** Lianhua Hill Park > Guan Shanyue Art Museum > Dafen Oil Painting Village > Nanling SAC Park
- Itinerary 3:** Light Industrial Products City > Sungang Crafts and Gifts City > Tianmian City of Design Creative Industrial Estate > Shenzhen Museum
- Itinerary 4:** Civic Center > Cultural Exhibition Palace > Dafen Oil Painting Village > Bantian Handmade Culture Park
- Itinerary 5:** OCT-LOFT > Tianmian City of Design Creative Industrial Estate > Guanlan Yong Feng Yuan exhibition hall > Guanlan Printmaking Village
- Itinerary 6:** Hehu New Residence > Bao'an Migrant Workers Museum > Shajing Oyster Museum > F518 Idea Land

TOUR OF THEME PARKS

- Itinerary 1:** Civic Center > Dameisha Beach > OCT East
- Itinerary 2:** Zhongying Street > Dameisha Beach > OCT East
- Itinerary 3:** Shenzhen Concert Hall > Window of the World > Evergreen Resort
- Itinerary 4:** Civic Center > Shenzhen Safari Park > Window of the World
- Itinerary 5:** Greenway of Overseas Chinese Town > OCT Art and Design Gallery > Splendid China • China Folk Culture Villages
- Itinerary 6:** Happy Valley > Mangrove Nature Reserve

URBAN TOUR

- Itinerary 1:** Lianhua Hill Park > Shenzhen Museum > Diwang Mansion > The MixC > Dongmen Pedestrian Street
- Itinerary 2:** Shenzhen Museum > Shenzhen Concert Hall > Convention and Exhibition Center > Yeller at Central Walk > Coco Park
- Itinerary 3:** Civic Center > Huaqiangbei > Diwang Mansion > Dongmen Pedestrian Street
- Itinerary 4:** Civic Center > OCT-LOFT > Coastal City > Sea World

TOUR OF BEACHES

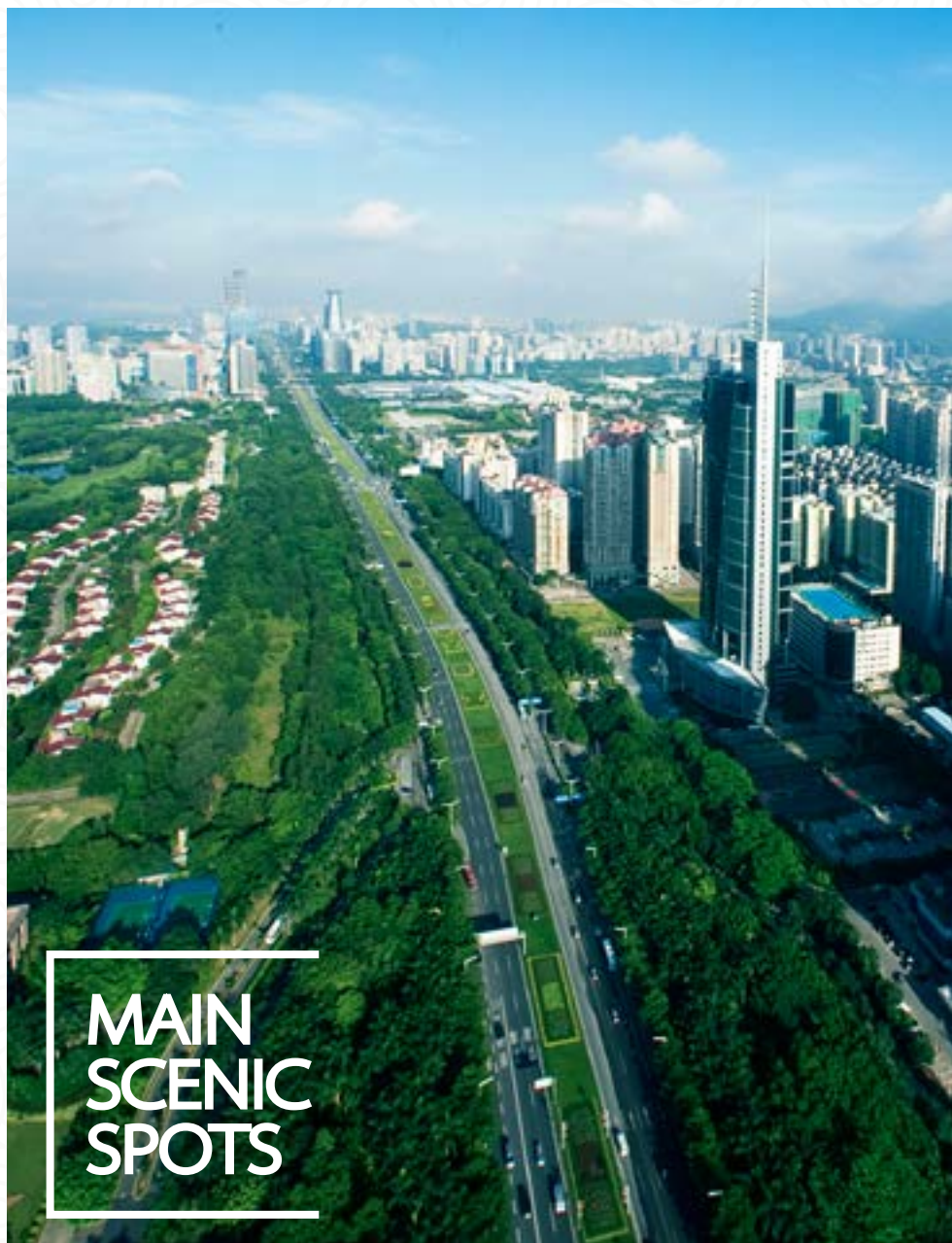
- Itinerary 1:** Yantian Coastal Plank Path > Cruise Tour of Shenzhen and Hong Kong > Dameisha Beach
- Itinerary 2:** Shenzhen Stadium > Baguang Village > angmeikeng Beach > Xichong Beach
- Itinerary 3:** Civic Center > OCT Harbor > Nanshan 15-km Coastal Corridor > Mangrove Nature Reserve
- Itinerary 4:** Shenzhen Universiade Center > Nan'ao Moon Bay > Rose Coast > Jinshawan Bay Holiday Resort

ECOLOGICAL TOUR

- Itinerary 1:** Civic Center > OCT Ecological Plaza > Evergreen Resort > Litchi World
- Itinerary 2:** Civic Center > Wutong Mountain > Fairy Lake Botanical Garden
- Itinerary 3:** Lianhua Hill Park > Shenzhen Museum > Overseas Chinese Town Greenway > Waterlands Resort
- Itinerary 4:** Guangming Farm > Guanlan Shanshui Tianyuan Tourism Culture Garden > Guanlan Printmaking Village > Universiade Park Greenway > Shenzhen Universiade Center

SELF-DRIVING TOUR

- Itinerary 1:** Civic Center > Shenzhen Universiade Center > Guangming Farm > Shenzhen Bay Sports Center
- Itinerary 2:** Shenzhen Stadium > Universiade Park Greenway > Shenzhen Universiade Center > Baguang Village > Xichong Beach
- Itinerary 3:** Artron Art Gallery > Shuibei Jewelry Street > Shenzhen Yijing National Cartoon and Animation Industry Base > Shenzhen Curio World
- Itinerary 4:** Dameisha Beach > National Music Creative Industrial Base > Shenzhen Maritime Sports Base & Maritime Sports School
- Itinerary 5:** Shenzhen 22 Art District > F518 Idea Land > Bao'an International Jewelry Trade Center > Guangming Farm > 127 Industrial Park Art Display
- Itinerary 6:** Longgang Cartoon and Animation Industry Park > Longgang Ornamental Stone Trading Base > Guanlan Yong Feng Yuan exhibition hall0 > Guanlan Shanshui Tianyuan Tourism Culture Garden



MAIN SCENIC SPOTS

OCT EAST Covering 9 square kilometers, OCT East was built by Overseas Chinese Town Group with an investment of 3.5 billion yuan. It was named a national ecological tourism zone by the National Tourism Administration and Ministry of Environmental Protection. There are two theme parks, two golf courses, three towns, four hotels and a temple.

WINDOW OF THE WORLD Window of the World is a must-see attraction that displays the essence of thousand-year-old human civilizations and worldwide cultures.

HAPPY VALLEY Happy Valley is one of the best theme parks in China and a modern, entertaining attraction for all ages.

SHENZHEN SAFARI PARK Shenzhen Safari Park is China's first zoo that lets animals live in natural habitats. There are nearly 10,000 wild animals of more than 300 species, most of which are rare and protected species, including eight tigers and ligers.

XIAOMEISHA SEA WORLD Covering 100,000 square meters, Xiaomeisha Sea World is located on the city's eastern coast. It features undersea performances and maritime culture.

OCT BAY Located among OCT's theme parks and along Nanshan's Binhai Boulevard, OCT Bay is a newly built cluster for business and leisure. It gathers shops, restaurants, leisure centers, hotels, offices and apartments, creating a new getaway for citizens to enjoy the city life while appreciating natural views.

MANGROVE NATURE RESERVE Located on Shenzhen Bay, Mangrove Nature Reserve is the smallest national-level nature reserve in the country. It's been labeled an internationally protected place by the International Union for Conservation of Nature and Natural Resources.

MISSION HILLS GOLF CLUB Mission Hills Golf Club is the only Asian club recognized by both the PGA and TPC. Covering 20 square kilometers in Shenzhen and Dongguan, Mission Hills Golf Club is China's largest and most well-equipped golf resort.

SHENZHEN MUSEUM Shenzhen Museum is a multifunctional museum featuring ancient collections, research, education and archaeology. It displays historic relics, crafts and folk products of south Guangdong.

GREEN PORCELAIN MUSEUM As China's biggest privately owned green porcelain museum, it is located in Luohu District and houses more than 2,000 pieces from the Shang to Qing Dynasty, fully presenting ancient China's porcelain history.

TRAVEL AGENCIES

Name	Tel
Shenzhen Tourism International Co. Ltd.	82215432
CITS Shenzhen	82477086
China Merchants International Travel (Shenzhen)	26691481
Shenzhen Port China Travel Service	25583729
CTS Shenzhen	82287644
Shenzhen Shenhua International Travel Service Co. Ltd.	82383960
OCT International Travel Service	26605518
CYTS Shenzhen International Travel Service	25970343
Shenzhen Pengyun International Travel Service	82435057
Shenzhen Oriental International Travel Service	22209000
Shenzhen Airport International Travel Service	23457351
Shenzhen Great Land International Travel Service	25155500
Shenzhen Luohu International Travel Agency Co. Ltd.	82392098
Shenzhen Overseas International Travel Service	25132138
Shenzhen Tianya International Travel Service Co. Ltd.	25155756
Professional Workers' International Travel Service	82203150
Shenzhen CEPT International Travel Service	83760128
BCTS Travel Service Shenzhen	22160878
Century Holiday International Travel Service Shenzhen	82135769 82136789
Shenzhen Airlines International Travel Service	33398966
CYTS Guangdong Railway Shenzhen	82116907

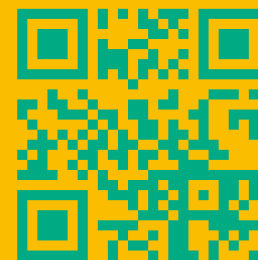
Shenzhen Comfort Travel Service	83777168
Shenzhen Jiannan International Travel Service	33355888
Shenzhen Top Tour International Travel Service	82119788
Roc International Travel Agency Co. Ltd.	82193639
Shenzhen Golden Crown International Travel Co. Ltd.	25598104
Haiyun International Travel Service	26864543
Jinghua CTS Hong Kong	82210011
China International Travel Service (Shenzhen)	61695900
CETS	25138888
SZFTA	83787777
Shenzhen Skysea International Travel Service	25914892
Shenzhen Huamei International Travel Service	25138022
Universal International Travel Service	86336564
Guangdong CTS	82355936
Shenzhen Hong Kong Macao International Travel Service	88899999
Shenzhen Junjie International Travel Service	25422212
Shenzhen Youth International Travel Service	25191970
Shenzhen Hexie International Travel Service	82382699
Shenzhen Zongheng Travel Service	33092682
Shenzhen Jinyan Travel Service	82290869
Shenzhen Taiyang International Travel Service	80099008
Shenzhen Huangchao International Travel Service	82292345

SHENZHEN PROFILE 2016

Produced by: Information Office of the Shenzhen Municipal People's Government
Compiled by: Shenzhen Daily

Add: Rooms 412-415, Front Building, 1018 Shennan Road Central, Futian District, Shenzhen, P.R. China
Tel: +86 (755) 88133365 88133400
Fax: +86 (755) 88117840
Email: szinfo@sz.gov.cn
Websites: <http://www.sz.gov.cn/>; <http://www.eyeshenzhen.com/>

Copyright by the Information Office of the Shenzhen Municipal People's Government
All rights reserved



www.sz.gov.cn



www.eyeshenzhen.com